



MICHIGAN DEPARTMENT OF
**LABOR & ECONOMIC
OPPORTUNITY**

MICHIGAN HIGH-SPEED INTERNET OFFICE
LEO-MIHIGHSPEEDINTERNET@MICHIGAN.GOV

AGENDA

+Who

+What

+Why

+Where

+How

WHO
WHAT
WHY
WHERE
HOW
ROBIN
BEAD
SDEPCG
PLANNING
TIMELINE



Michigan High-Speed Internet Office

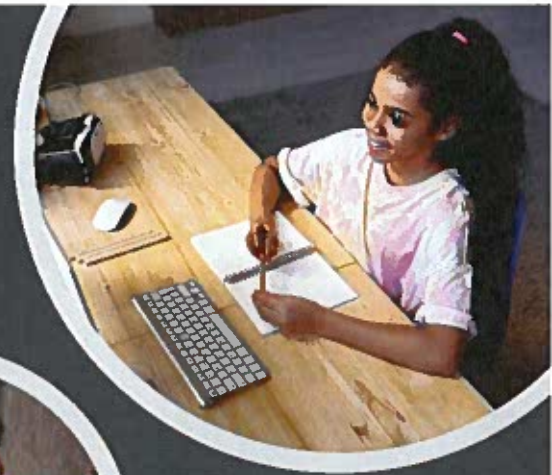


- + Created by Executive Directive in June 2021, authorized for funding and staff in April 2022
- + Located within the Prosperity Division of the Department of Labor and Economic Opportunity
- + Michigan's single point of contact for all things broadband and connectivity

WHO
WHAT
WHY
WHERE
HOW
ROBIN
BEAD
SDEPCG
PLANNING
TIMELINE

Mission

Create a more
digitally equitable
Michigan where
everyone can
leverage
technology to
improve their
quality of life.



WHO
WHAT
WHY
WHERE
HOW
ROBIN
BEAD
SDEPCG
PLANNING
TIMELINE

Framework

- Digital Equity is the goal.
- Digital Divide is the issue.
- Digital Inclusion is the bridge over the divide to achieve equity:
 - Affordable, robust broadband internet service
 - Internet-enabled devices that meet the needs of the user
 - Access to digital literacy training
 - Quality technical support
 - Applications and online content designed to enable and encourage self-sufficiency, participation, and collaboration



WHO
WHAT
WHY
WHERE
HOW
ROBIN
BEAD
SDEPCG
PLANNING
TIMELINE



Our work is not about technology, it's about people.

- + Every student that had to sit outside a library or McDonald's to access Wi-Fi to complete their schoolwork during the pandemic.
- + Every senior that wants to stay in their home and still have access to world-class healthcare.
- + Every farmer that can't access the latest tech to grow their business.
- + Every entrepreneur that wants to start a small business.
- + Every community that wants to broaden their engagement.
- + Every business that wants to find a new customer base.
- + Every veteran that wants to stay connected with their fellow service members.
- + Every person that's been snowed-in and wants to still work or learn remotely.
- + Every teacher to digitally support their students learning.
- + Every parent who wants to learn a new skill to support their family.
- + Every prior offender looking for a second chance.
- + Every refugee who now calls Michigan home.
- + Every concerned citizen that is homebound and still wants to engage in their community.
- + Every job applicant that had their video interview drop because their internet was too slow.



WHO
WHAT
WHY
WHERE
HOW
ROBIN
BEAD
SDEPCG
PLANNING
TIMELINE

Where do we need to do this work?

- + Rural communities
- + Urban centers
- + Small towns
- + Vast open spaces
- + Every corner of our state



WHO
WHAT
WHY
WHERE
HOW
ROBIN
BEAD
SDEPCG
PLANNING
TIMELINE

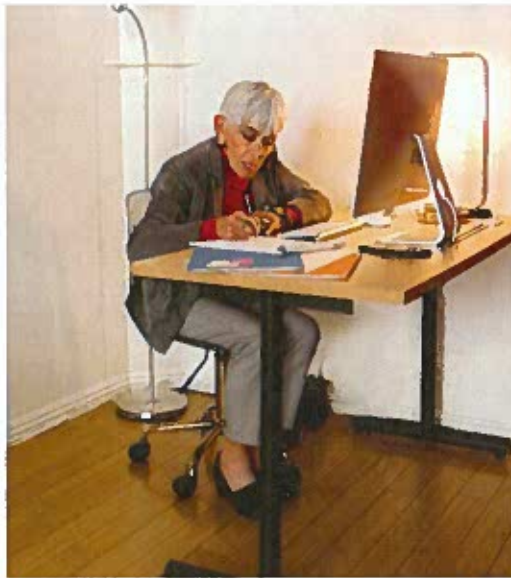


Goals

- + Ensure universal availability of broadband to every home, business, institution, and community
- + Ensure 95% of households adopt a permanent connection at home

Guiding Principles

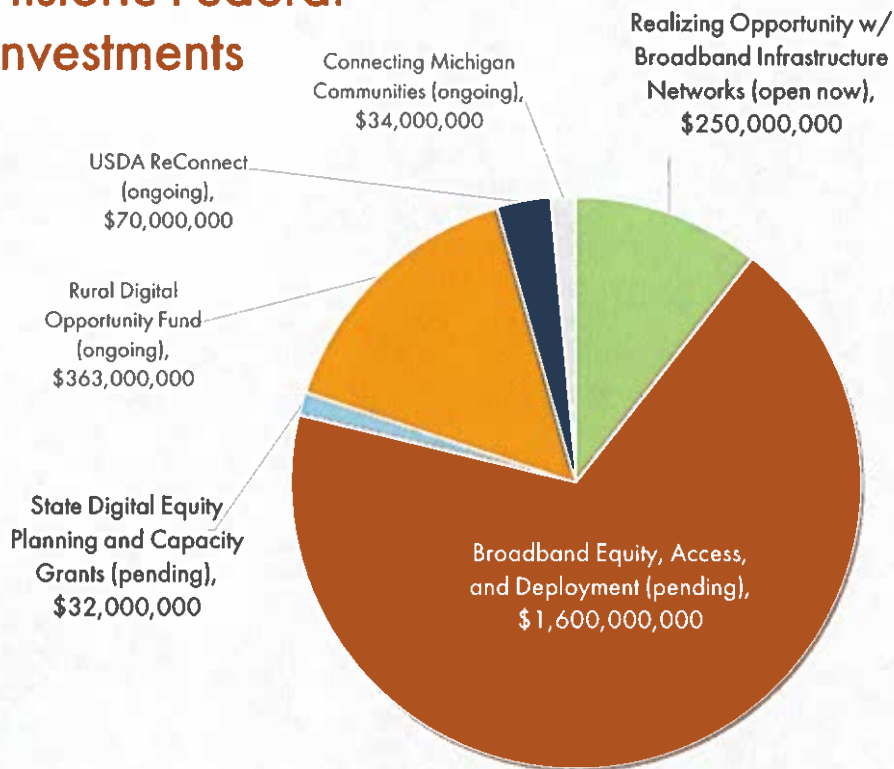
- + Creativity
- + Efficiency
- + Transparency
- + Collaboration



WHO
WHAT
WHY
WHERE
HOW
ROBIN
BEAD
SDFPCG
PLANNING
TIMELINE



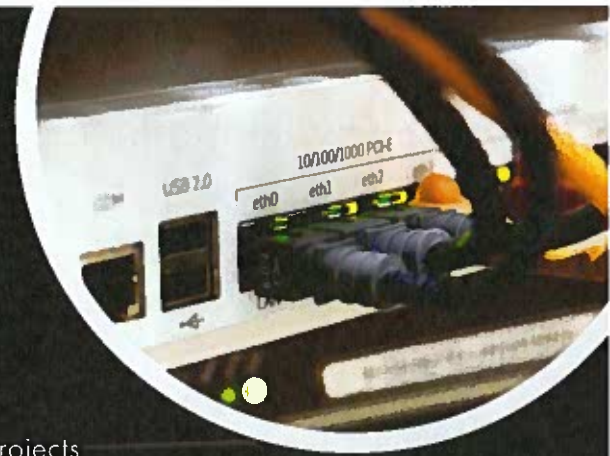
Historic Federal Investments



WHO
WHAT
WHY
WHERE
HOW
ROBIN
BEAD
SDFPCG
PLANNING
TIMELINE

ROBIN Program

- + Last-mile and middle-mile grant program
- + Unserved defined at 100/20 Mbps
- + Networks must deliver 100/100 Mbps service
- + Funded with \$250M from the Capital Projects Fund
- + Administered by US Treasury
- + Up to 35% of funds can be used for middle mile only projects
- + Open to internet service providers or communities that have created a public-private partnership with an ISP
- + Grantees must participate in the Affordable Connectivity Program
- + Funds must be expended by Dec. 31, 2026
- + Application window open now, closes March 14
- + Anticipate being able to connect 60,000 – 75,000 locations



WHO
WHAT
WHY
WHERE
HOW
ROBIN
BEAD
SDEPCG
PLANNING
TIMELINE

BEAD Program

- + Largest source of broadband infrastructure funding ever
- + Administered by the National Telecommunications and Information Administration (NTIA) in partnership with states
- + Priority given to building networks that connect unserved (25/3 Mbps) and underserved (100/20 Mbps) locations and community anchor institutions
- + Exact allocation is not yet known but is estimated to be \$1.5B - \$1.8B, allocation based on new FCC map
- + Implemented as a subgrant program to a variety of entities include private ISPs, non-profits, communities, co-operatives, and others
- + Begins with robust and thorough planning and community engagement beginning now
- + Subgrants likely to start in 2024



WHO
WHAT
WHY
WHERE
HOW

ROBIN
BEAD
SDEPCG
PLANNING
TIMELINE



State Digital Equity Planning & Capacity Grants

- + Provides states a formula-based allocation with two opportunities; 1) to create a statewide digital equity plan; and 2) a follow-on program for implementing that plan
- + Planning funds have been awarded but not appropriated to MIHI; implementation funds should be announced in early 2024
- + Designed to address the needs of 'covered populations;'
 - + Rural residents,
 - + Aging individuals
 - + Low-income households
 - + Veterans
 - + Individuals with disabilities
 - + Individuals with a language barrier
 - + Members of a racial or ethnic minority group
 - + Incarcerated individuals



WHO
WHAT
WHY
WHERE
HOW
ROBIN
BEAD
SDEPCG
PLANNING
TIMELINE

MI Connected Future

- + Embarking on a comprehensive and robust statewide broadband planning effort
- + Plan will meet the requirements of both the BEAD and SDEPG programs and provide the state with a plan for achieving universal access and improving digital equity
- + MIHI plans to implement multiple communications and feedback streams to ensure we are listening to all of Michigan's diverse voices and identifying solutions that close our gaps



WHO
WHAT
WHY
WHERE
HOW
ROBIN
BEAD
SDEPCG
PLANNING
TIMELINE



MI Connected Future

PARTNERSHIP ROUNDTABLE

- Community Anchor Institutions
- Community Organizations
- Covered Populations
- Deployment
- Economic Opportunity
- Internet Service Providers
- Local Government
- State Agencies
- Sustainability
- Tribes
- Workforce Development

COMMUNITY MEETINGS



MI Connected Future Plan

BEAD 5-Year Action
Plan Requirements

State Digital Equity
Plan Requirements

WHO
WHAT
WHY
WHERE
HOW
ROBIN
BEAD
SDEPCG
PLANNING
TIMELINE

MI Connected Future

- + Have held eleven of forty community meetings so far in Detroit, Warren, Pontiac, Jackson, Dundee, Coldwater, Ann Arbor, Benton Harbor, Battle Creek, Marquette
- + Next set of meetings in St. Johns, Lansing, Charlotte, Lapeer, Marysville, Bad Axe, Saginaw, Mt. Pleasant, Alma, Hastings
- + www.Michigan.gov/miconnectedfuture
- + First Partnership Roundtable (PRT) being held this week
- + Registration from more than 220 unique organizations and nearly 300 participants.
- + PRT will continue monthly to assist MIHI in planning and operationalizing federal programs

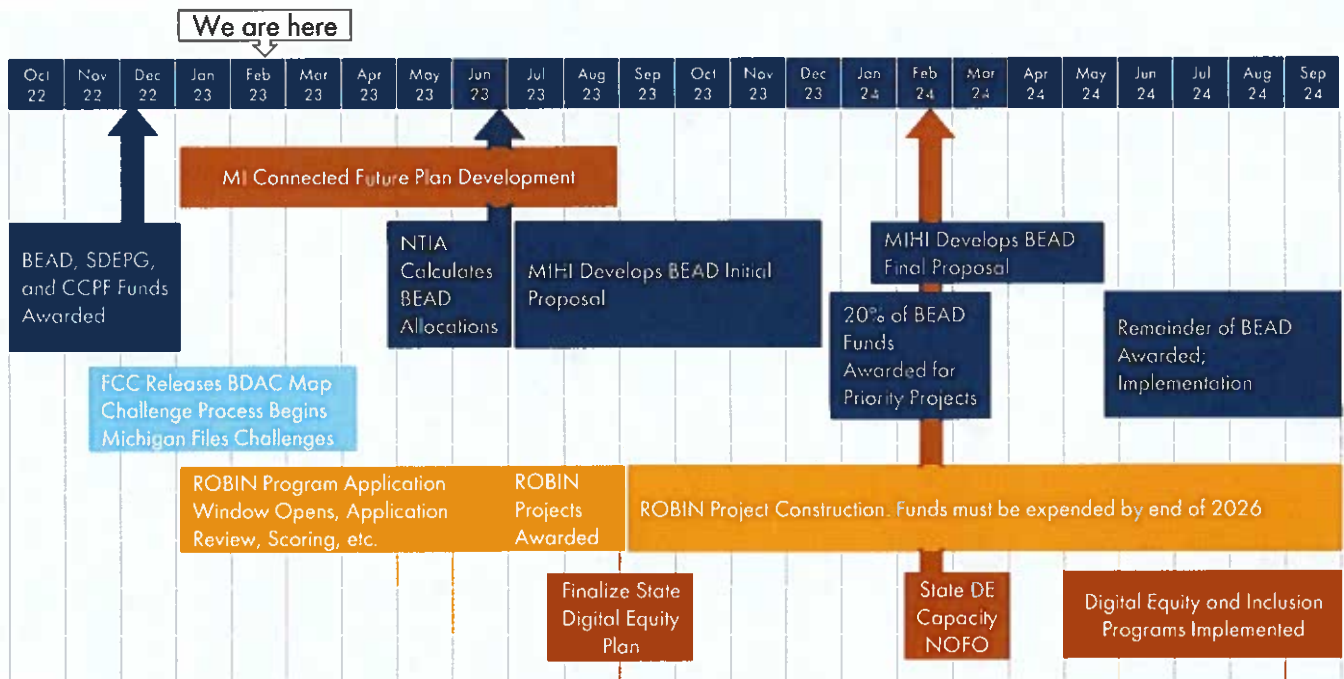


WHO
WHAT
WHY
WHERE
HOW

ROBIN
BEAD
SDEPCG
PLANNING
TIMELINE



Estimated Timeline



Thank You

Questions?



MiDeptLEO



MichiganLEO



MichiganLEO



MichiganLEO

