

The Child Care Crisis is a Labor Crisis

WHEN CHILD CARE WORKS, WE ALL WORK

Families Can't Afford to Pay

It is recommended that families pay **no more than 7%** of their income for child care. Most families pay much more than that.

In Michigan, single-income families pay an average of of their household income on infant care



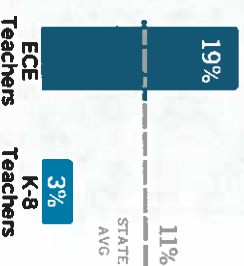
Average annual tuition rates

- \$10,870 per infant
- \$10,374 per infant
- \$8,959 per infant

Teachers Can't Afford to Stay

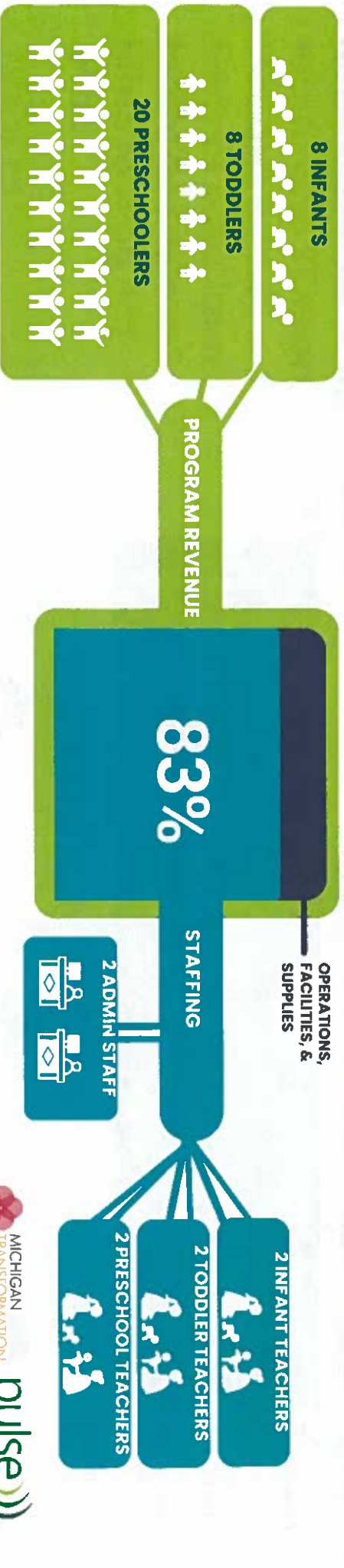
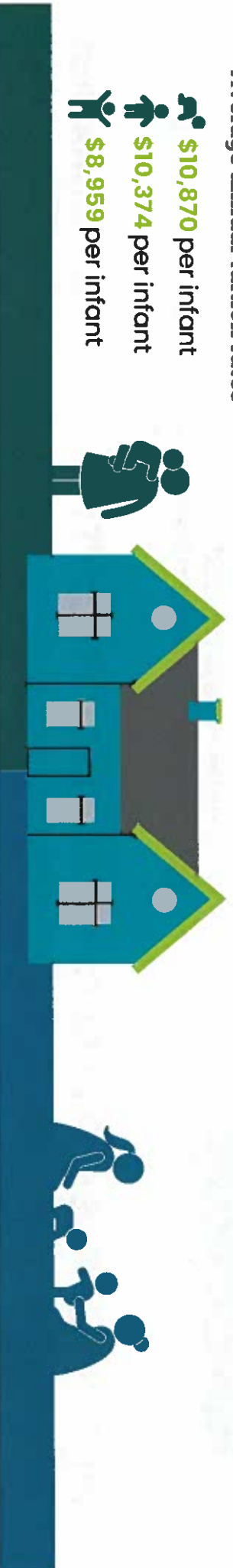
Despite being a crucial support for working families, child care providers are **some of the lowest-paid workers** in Michigan.

POVERTY RATES IN MICHIGAN



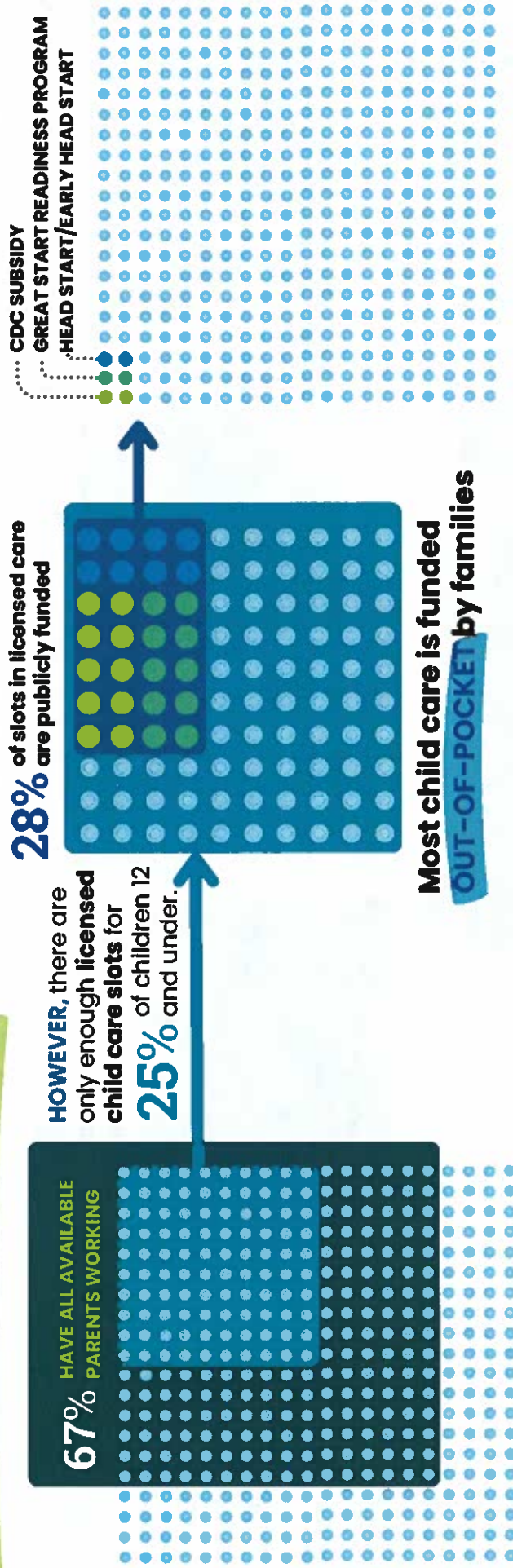
SIMILAR MEDIAN HOURLY WAGES

Coatroom Attendants	\$11.34
Fast Food Workers	\$11.38
Child Care Teachers	\$11.54
Parking Attendants	\$11.72
Dishwashers	\$11.85

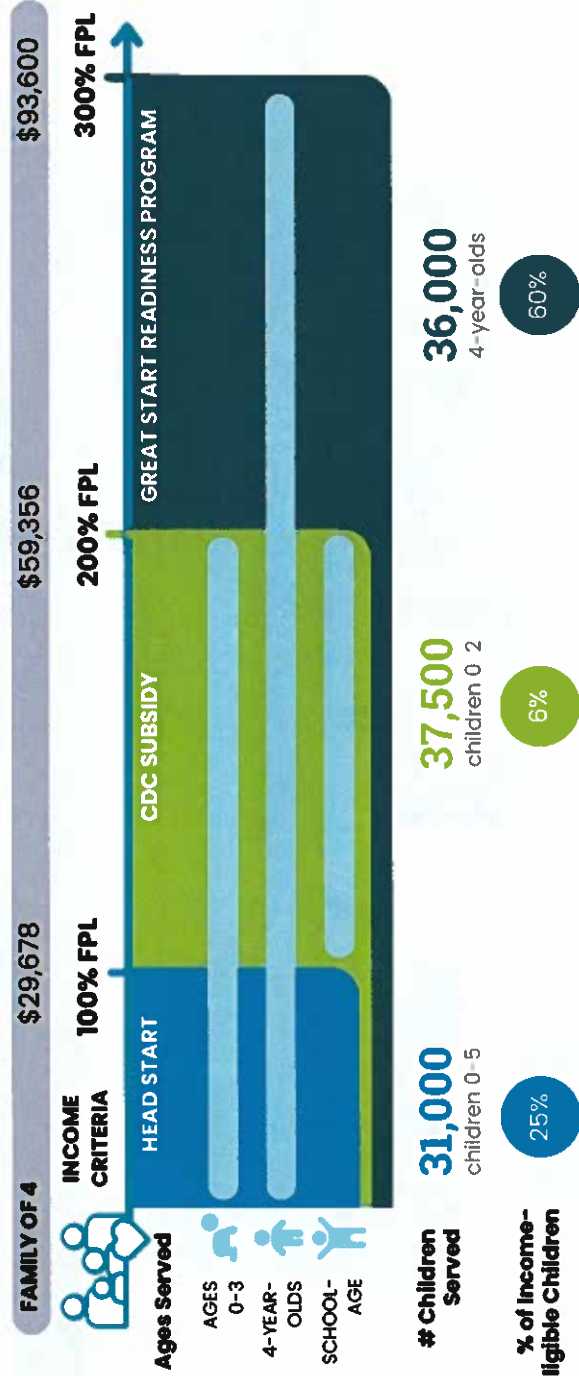


THERE ARE 1.5 MILLION CHILDREN AGES 12 AND UNDER IN MICHIGAN.

HOW IS CHILD CARE PAID FOR?



WHO IS ELIGIBLE FOR PUBLICLY FUNDED CHILD CARE?



This means that only **6%** of the **1.5 MILLION** children ages 12 and under have support available to their families to offset the cost of child care.

-The Child Care Crisis is a Labor Crisis WHEN CHILD CARE WORKS, WE ALL WORK

District	Median cost of child care	% income for one child	% ALICE in House District
22	\$11,482	16.8%	23%
24	\$11,482	16.8%	24%
59	\$12,456	14.2%	25%
88	\$10,021	14.5%	30%
72	\$10,265	14.9%	30%
89	\$12,506	13.4%	34%
27	\$11,482	16.8%	38%
96	\$9,185	13.1%	40%
61	\$12,456	14.2%	40%
69	\$10,265	14.9%	42%
98	\$9,488	14.8%	43%
38	\$10,654	14.4%	43%
2	\$11,482	16.8%	43%
25	\$11,482	16.8%	45%
92	\$10,330	14.8%	47%
44	\$10,140	14.7%	48%
100	\$9,460	17.2%	50%
87	\$10,021	14.5%	50%
14	\$11,482	16.8%	56%
3	\$11,482	16.8%	58%
1	\$11,482	16.8%	71%



MICHIGAN
TRANSFORMATIVE
COLLECTIVE



© Jay W. L. Uygon, National For Emergency Responder

Regional Child Care Planning

In partnership with the Michigan Economic Development Corporation and the Policy Equity Group, ECIC's Child Care Innovation Fund is supporting Regional Child Care Planning Coalitions to develop Regional Child Care Plans that meet the needs and preferences of working families and address Michigan's current child care crisis.

These projects are supported by funding from the Michigan Department of Education utilizing American Rescue Plan Act (ARPA) funding, from the Office of Child Care, Administration for Children and Families, U.S. Department of Health and Human Services.

