

House Standing Committee on Transportation, Mobility, and Infrastructure

Laura Mester, C.P.A.
Chief Administrative Officer

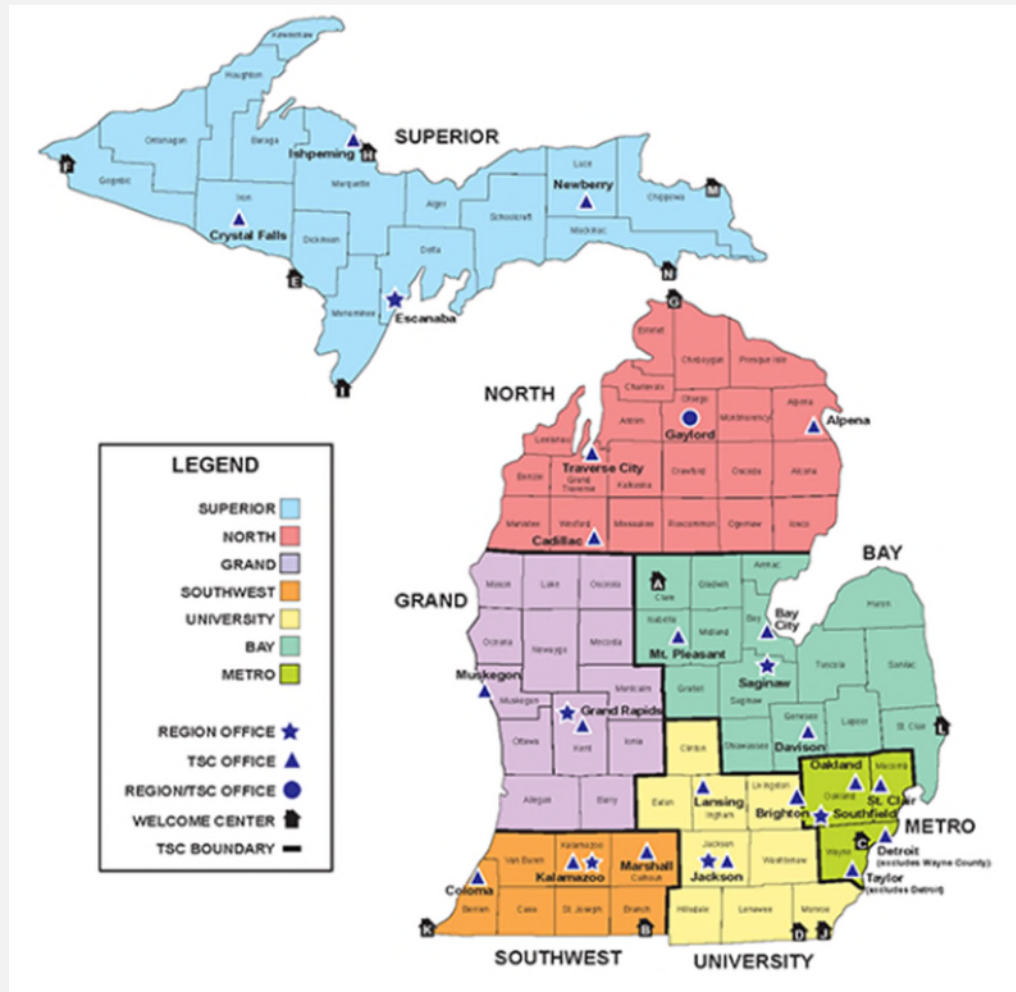
Gregg Brunner, P.E.
Acting Chief Engineer &
Chief Operating Officer

January 31, 2023

“Providing the highest quality
integrated transportation services
for economic benefit and improved
quality of life.”



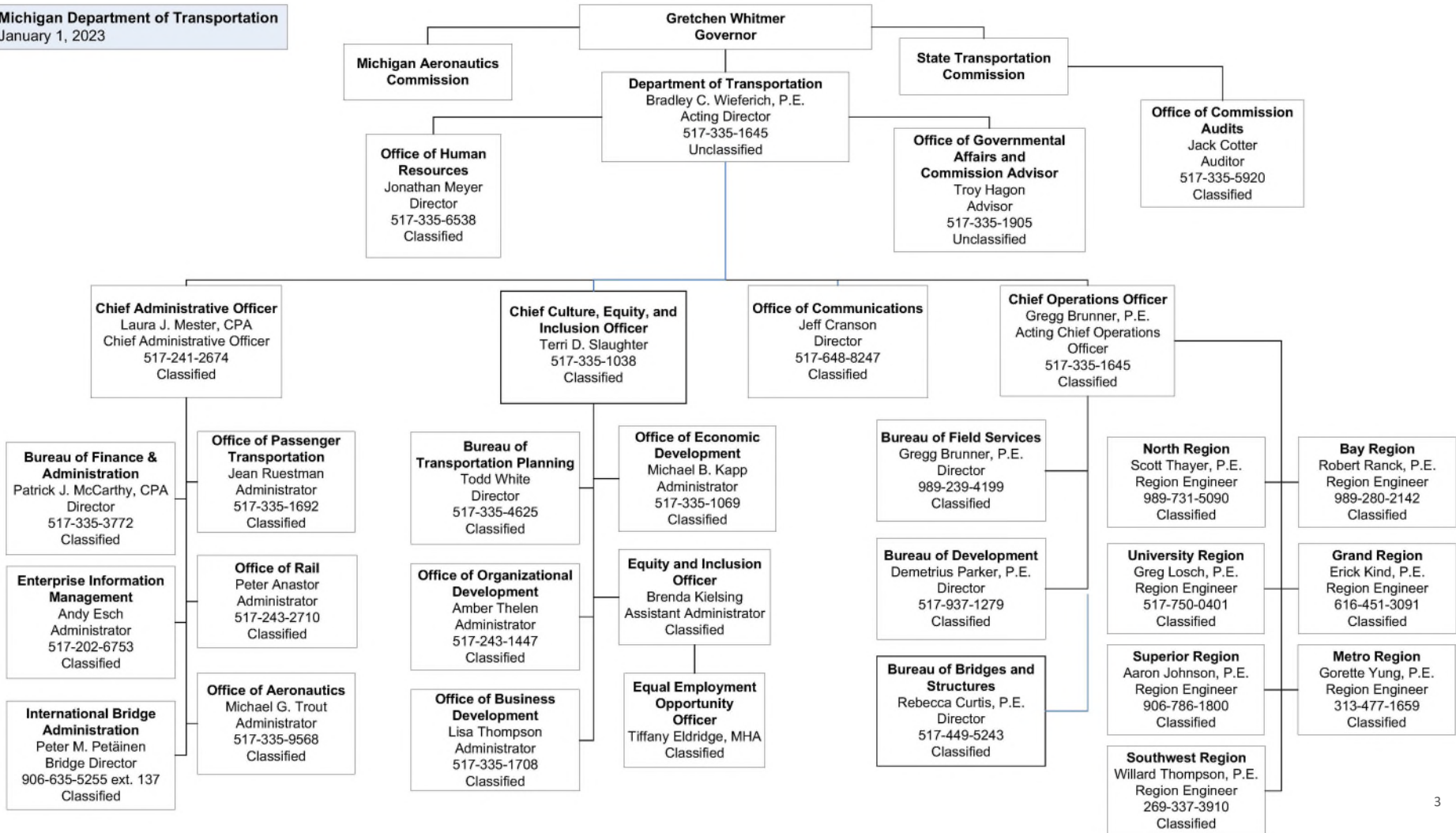
We're Positioned to Serve . . .



www.michigan.gov/mdot

We're Positioned to Serve . . .

Michigan Department of Transportation
January 1, 2023



A Healthy Economy Relies on Good Transportation

- 35% of US/Canada trade value flows through Michigan
- \$796 billion in freight is moved each year on Michigan's highways, rail, air, and water ports
- Trucking accounts for 74% of all freight tonnage moved in Michigan
- Travel & Tourism - Visitors to the state spend \$26.3 billion yearly & support 230,000 jobs



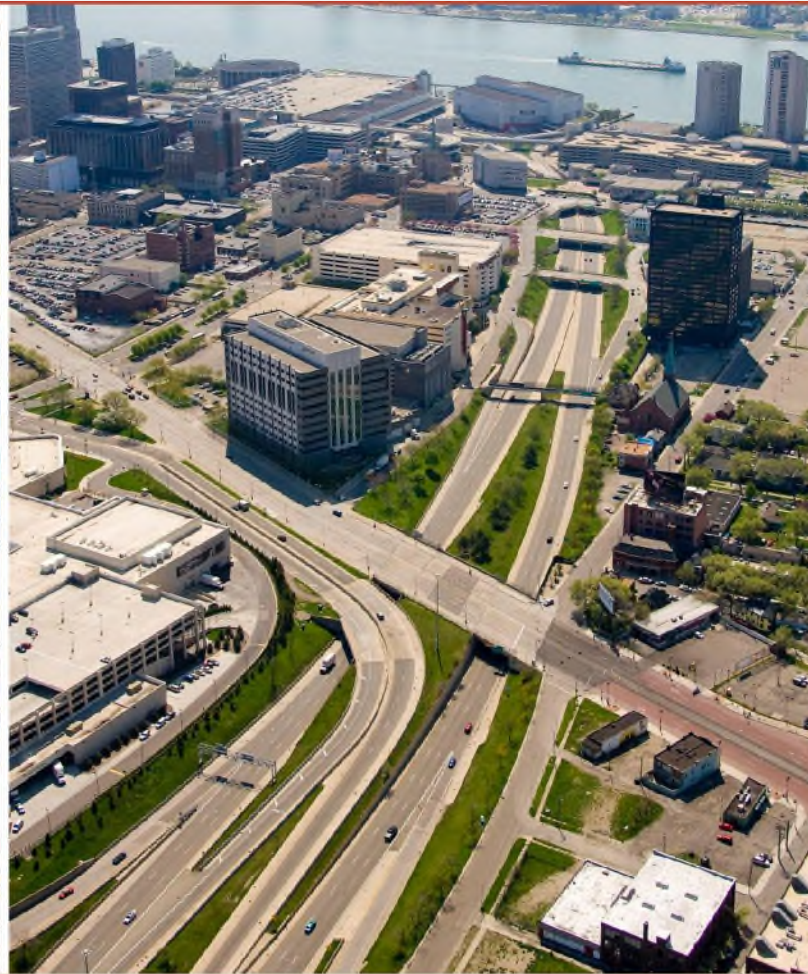
All Transportation Supports the Economy

- Operation of bus transit systems contribute an estimated \$900 million to the economy each year
- Aviation contributes more than \$22 billion/year
- Bicycling provides an estimated \$668 million/year in economic benefit

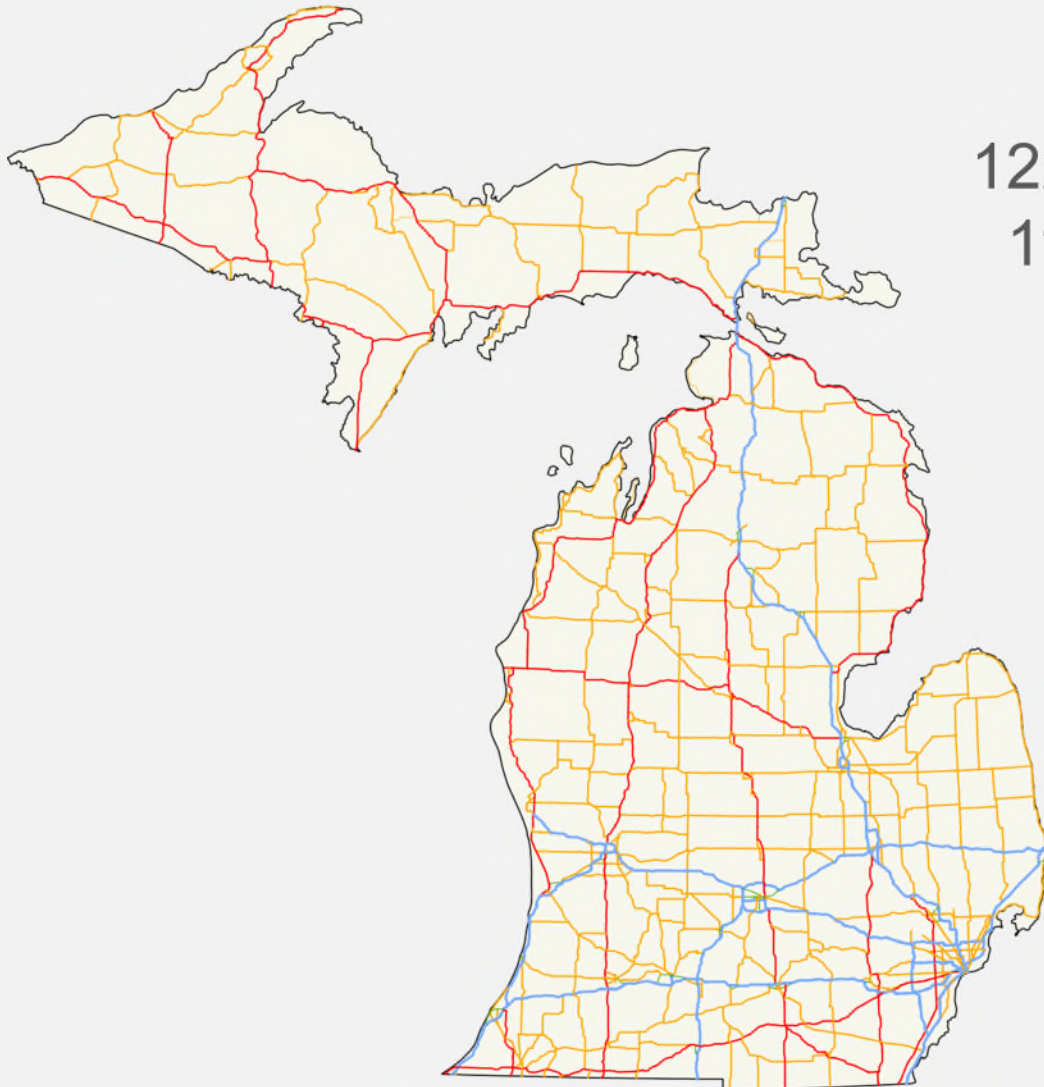


Michigan's Multi-Modal Transportation System

Roads & Bridges ♦ Transit ♦ Non-Motorized ♦ Air ♦ Marine ♦ Rail



Roads & Bridges



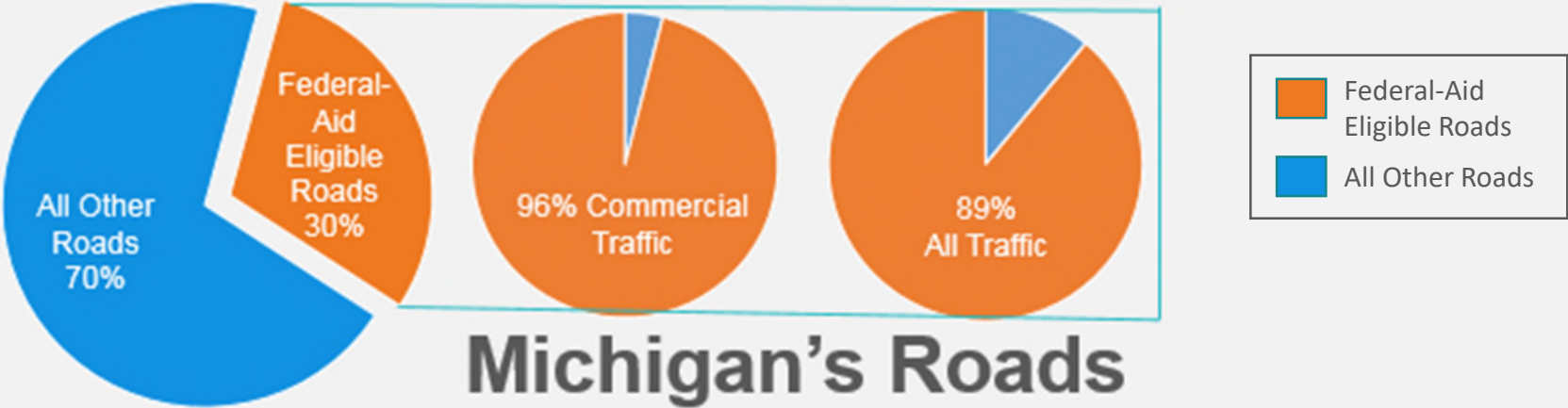
122,000 road miles
11,700 bridges

1 MDOT
83 County Road Agencies
531 Municipal Jurisdictions

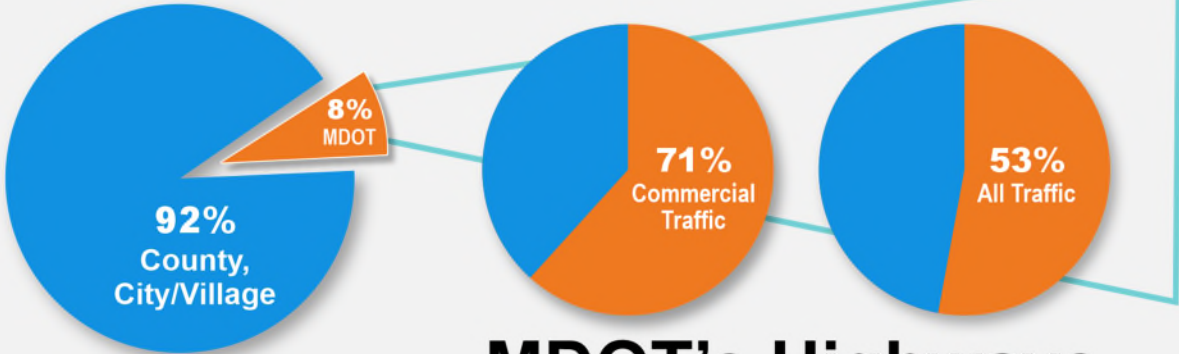
Transportation Asset
Management Council
www.michigan.gov/tamc

Federal Aid Oversight

Michigan's Road Network



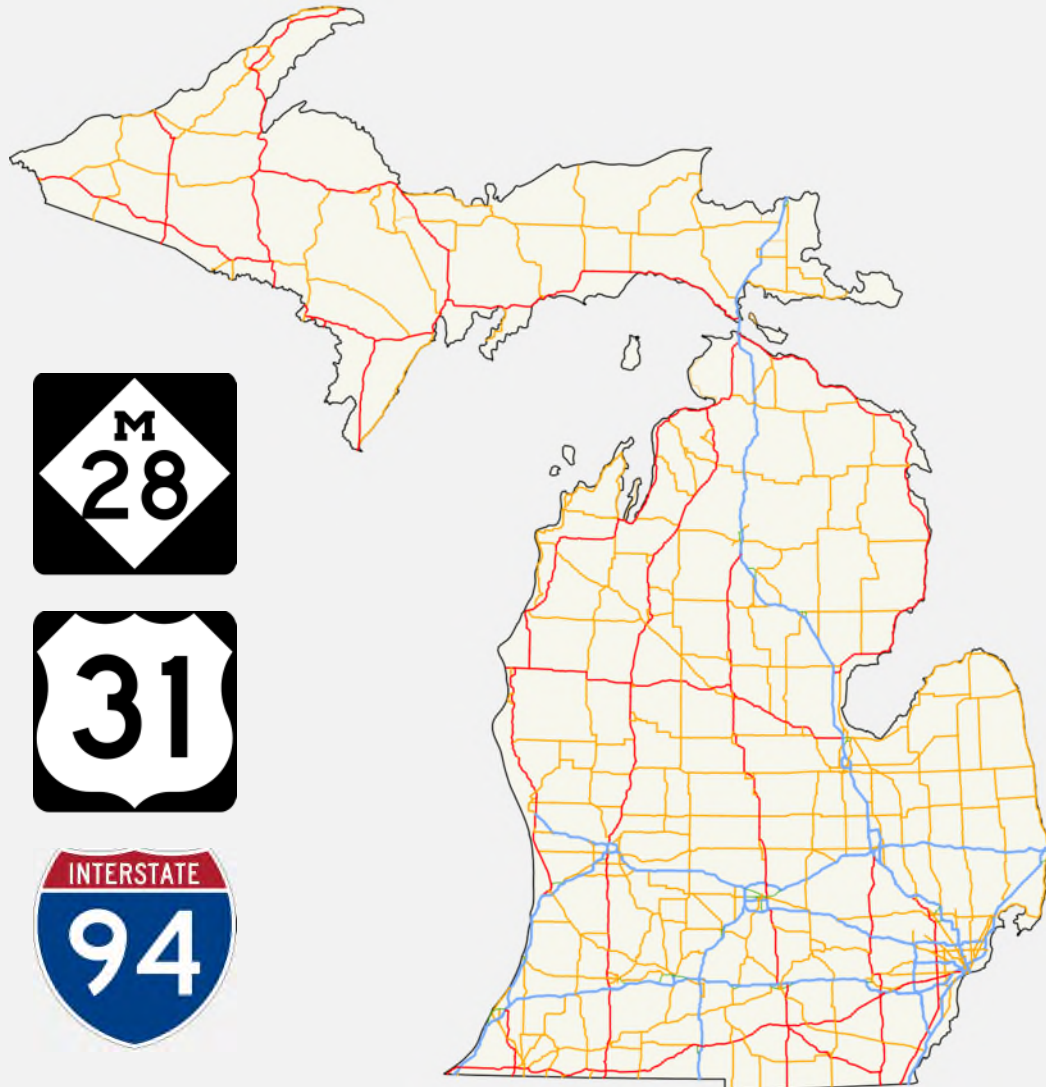
**Michigan's Roads
122,000 Miles**



**MDOT's Highways
9,668 Miles**



State Trunkline Roads & Bridges



9,664 miles

4,811 bridges

82 roadside parks

77 rest areas

Planning ♦ Design
Construction ♦ Operation
Maintenance ♦ Permitting

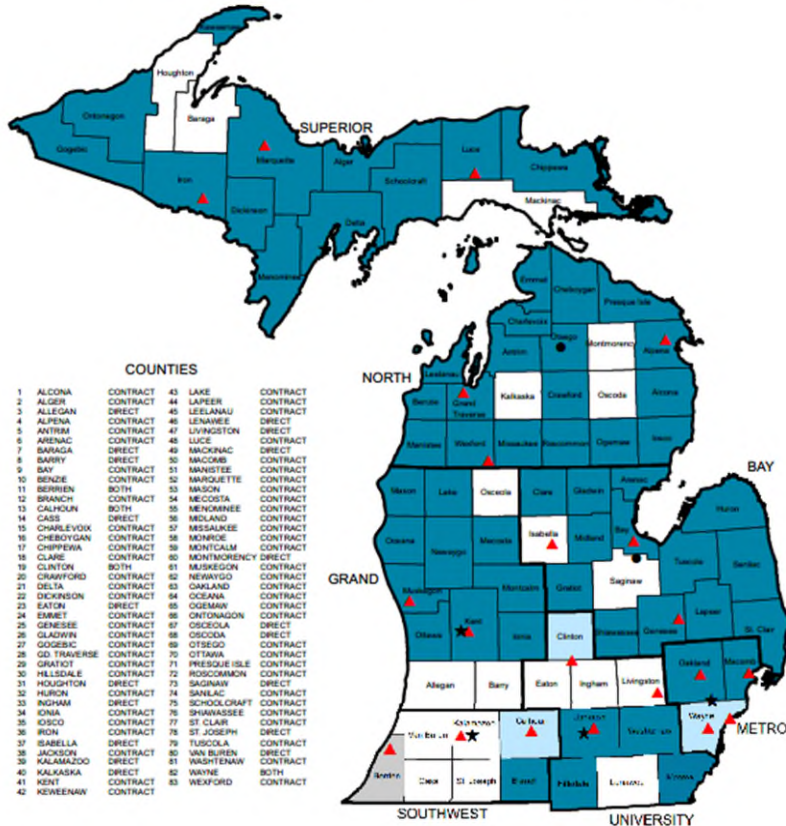
Construction by Low Bid

Consultant Services
(By \$ for projects completed in FY 2020)
Design – 61%
Const. Engineering – 56%

State Trunkline Roads & Bridges - Maintenance



Maintenance Responsibilities by County



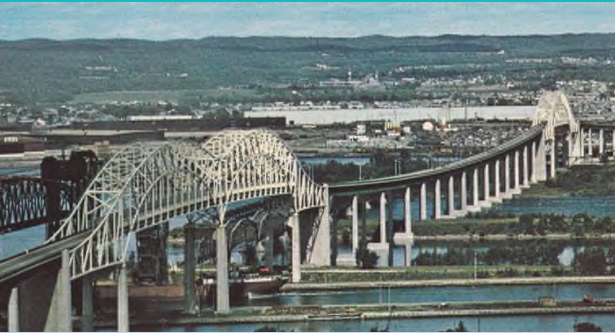
Snow & ice, road surface, bridge, culverts, drains, pump stations, signals, signs, roadside features

31 MDOT maintenance garages
63 County road agency contracts
170 Municipal contracts

Private contracts for maintenance:

- City of Pontiac
- Metro Detroit Freeway Lighting P3
- I-75 P3 (8 Mile to 13 Mile)
- Special Services like ITS devices (cameras, digital signs), fencing, guardrail, & “heavy maintenance”

Big Bridges & Border Crossings



International Bridge
Independent International Authority
MDOT HR & Budget Mgt

Ambassador Bridge
Privately Owned & Operated



Mackinac Bridge
Independent Authority
MDOT HR & Budget Mgt

Detroit-Windsor Tunnel
Municipality Owned, Privately Operated

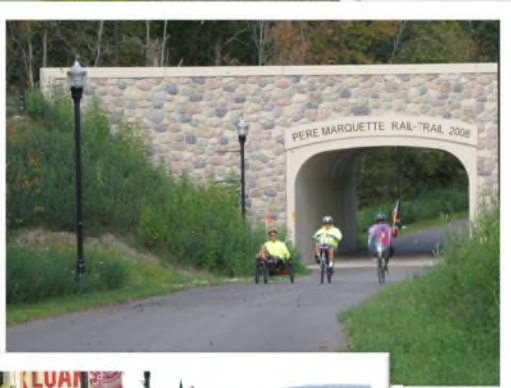


Blue Water Bridge
US Half Owned by MDOT
MDOT HR & Budget Mgt

Gordie Howe International Bridge
Independent International Authority
Canadian HR & Budget Mgt



Non-Motorized Transportation



- Sidewalks - municipal
- Independent paths - varies

60 miles of bicycle lanes
3,175 miles paved shoulders
3 U.S. Bicycle Routes



Transit & Intercity Passenger Transportation



- 78 transit agencies
- 30 million passenger trips/year (2021)
- 5 contracted intercity bus routes
- MDOT's role:
 - Act 51 Operating Assistance
 - Grant Administration
 - Safety & Regulatory Oversight
 - Supplementing market driven intercity carrier service to improve access & frequency

Aviation



Airport System:

- 234 Public Use airports
 - 18 Commercial Service airports
- 4 state owned airports
- 13.9 million passengers/year (2021)



MDOT's role:

- Grant Administration
- Regulatory Oversight
- Safety Education



Emerging Issues:

- UAS Integration
- PFAS

Marine Transportation



- 31 cargo ports handle 51 million tons of freight each year
- 5 public passenger ferries
- New Soo Lock Project
- MDOT's role:
 - Act 51 Operating Assistance
 - Grant Administration
 - Safety & Regulatory Oversight

Rail Transport



- 3600-mile system largely privately owned & maintained
- 4 Class I railroads
- 24 Shortline railroads
- 3 intercity Amtrak routes
- 598,474 riders in FY22

- MDOT's role includes:
 - Crossing & rail-worker safety
 - Intercity passenger-rail operating support
 - 665 miles of state-owned rail
 - Grant administration

Transportation Funding

Estimated Transportation Revenue Fiscal 2023	
State Road-user Fees	
Vehicle registration and title tax	\$1,479 M
Gasoline tax	\$1,210 M
Diesel fuel tax	\$260 M
Total of User Fees	\$2,949 M
Income, marijuana taxes; other	\$697 M
Total State MTF Revenue	\$3,647 M
Federal Aid for Roads	\$1,570 M

Transportation Funding

Expected Fund Distributions Fiscal 2023

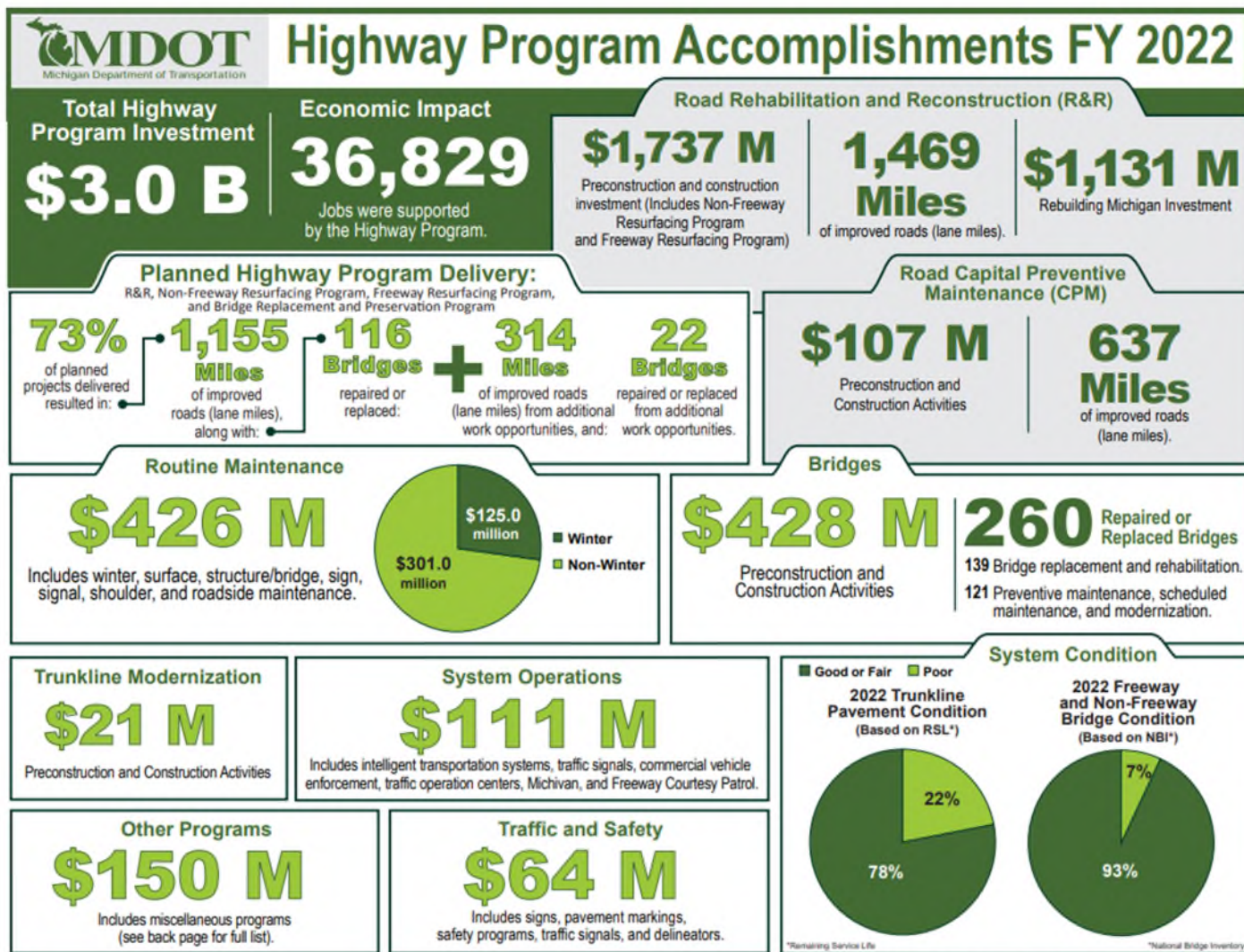
State Restricted Funds

State highways	\$1,355 M
Local roads	\$1,895 M
Public transportation	\$266 M

Federal Aid for Roads

State highways (75%)	\$1,178 M
Local roads (25%)	\$393 M

Highway Program Accomplishments



Source: MDOT Bureau of Transportation Planning, Statewide Transportation Planning Division. All program dollar amounts have been rounded. Version finalized Jan. 2023

Other Resources

- www.michigan.gov/mdot
- **Facebook**:
www.facebook.com/MichiganDOT
- **Twitter**: Statewide -
www.twitter.com/MichiganDOT
- **YouTube**: www.youtube.com/MichiganDOT

The Facebook logo, consisting of the word "facebook" in white lowercase letters on a dark blue rectangular background.The Twitter logo, featuring the word "twitter" in a light blue, rounded, lowercase font with a white outline, set against a light blue rectangular background.The YouTube logo, with the word "You" in black and "Tube" in white, both in a bold sans-serif font, set against a red rounded rectangular background.

Questions?

