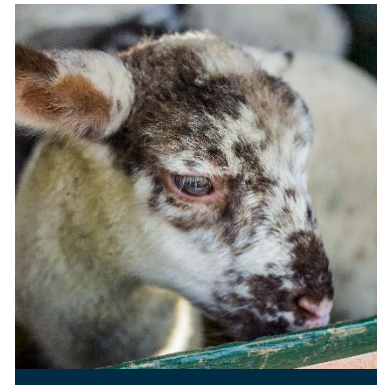
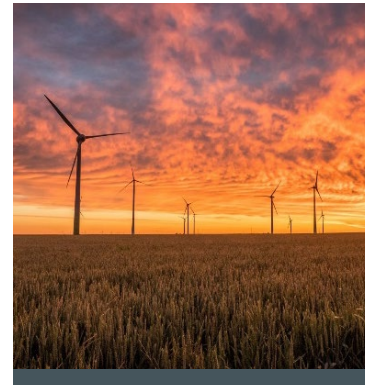
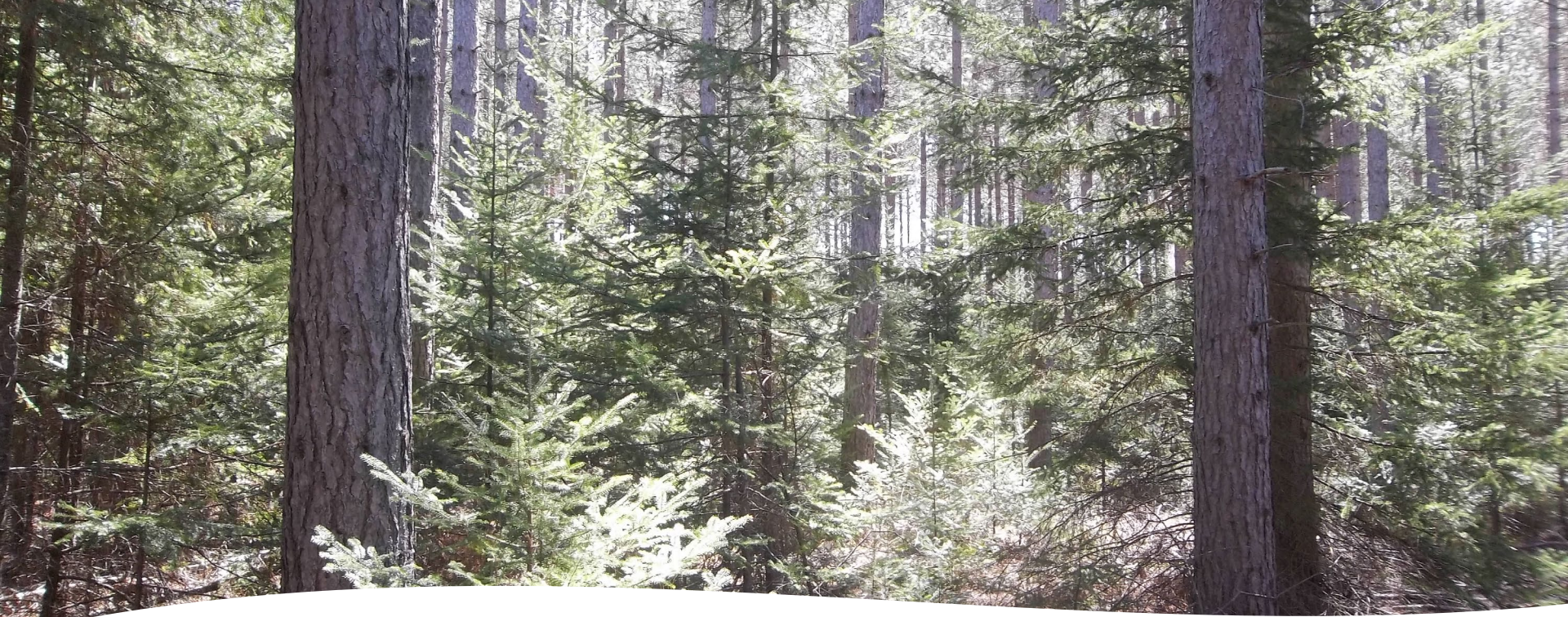




PRIVATE FOREST LANDS PROGRAMS



Ben Schram
Forestry Assistance Program
Coordinator



Why Forests are Important to Michigan

- Michigan has 20 million acres of forested land
- Our forest products industry supports 99,234 jobs and provides \$21.2 billion annually to Michigan's economy
- Clean air, clean drinking water, stabilize soil, wildlife habitat

Why Private Forest Lands Programs

- 9 million acres are family forests
- More than 400,000 individual landowners
- Only 20% of private forest land is actively managed
- Sustainably managed forests:
 - Are healthier, resilient
 - More productive
 - Provide diverse wildlife habitat



MDARD's Forestry Programs

Forestry Assistance Program (FAP)

Qualified Forest Program (QFP)

Climate Action and Reforestation in Northern
Michigan





MICHIGAN FORESTRY Assistance Program

- Support family forest owners in realizing the economic, social, and ecological sustainability of their forests
- Values
- **FAP does not compete with the private sector**
- Support enrollment in QFP



Qualified Forest Program

Benefits to Landowners

- Property tax exemption
- Prevents “uncapping”
- A plan for the forest
- Income from timber sale

Benefits to Michigan

- Wood to market
- Resilient forests
- Keep forests as forests



FY23 Proposed Funding

Appropriation #60900

- Private Forest Land Enhancement Fund: \$1,080,100
- General Fund: \$1,598,500
- USDA Federal Funds: \$5,400,000
- Total \$8,078,600
- FTE = 9.0
- 19 CD Foresters



Climate Action and Reforestation in Northern Michigan

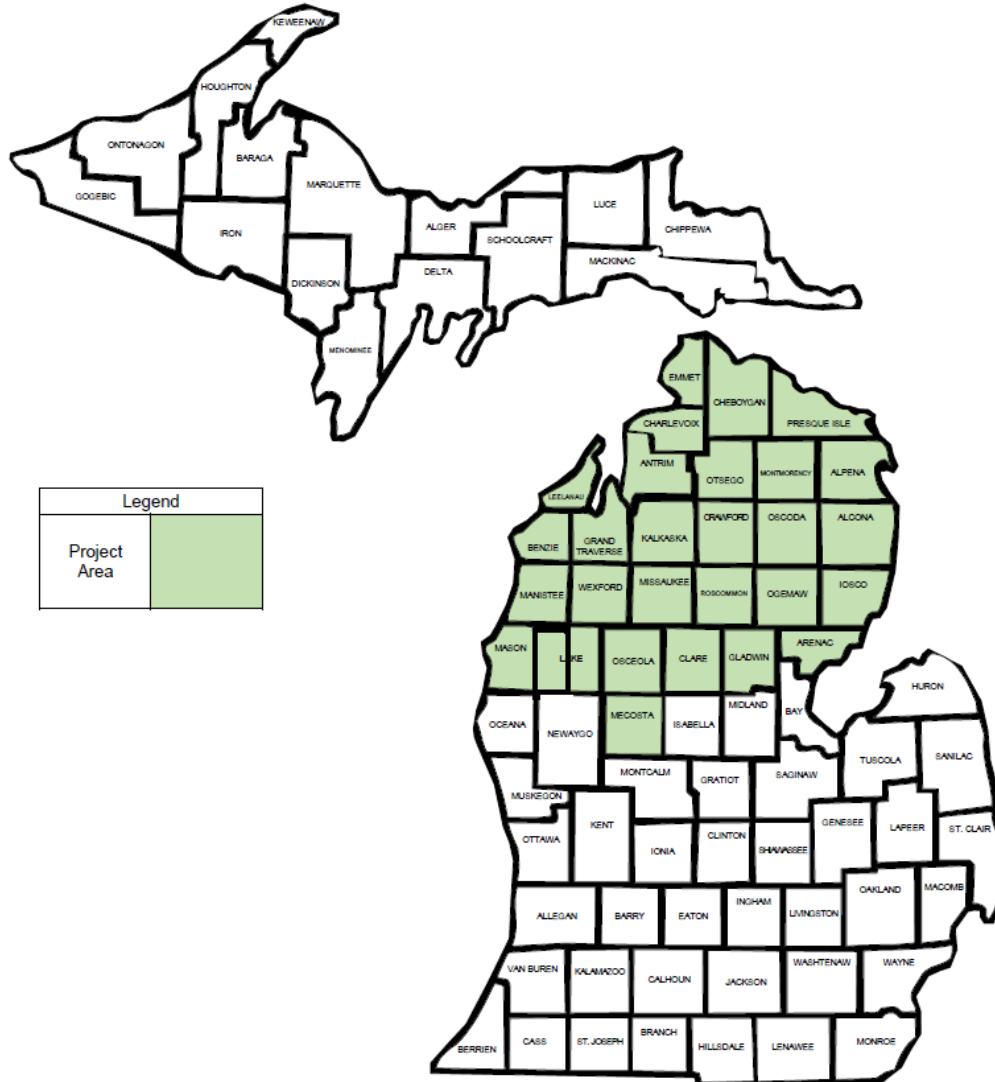


- Regional Conservation **Partnership** Program
- \$5.4 million in federal funding

- Simpler, more efficient model for large-scale tree planting on private land.



Climate Action and Reforestation in Northern Michigan



Project Goals

1. Leverage federal and partner resources to implement the MI Healthy Climate Plan.
2. Prevent soil erosion and protect water quality by planting trees.
3. Ensure long-term forest stewardship.
4. Educate landowners about climate resilient forestry
5. Demonstrate the viability of a unique and efficient reforestation program.



Questions?

John Switzer

Conservation Programs Manager
SwitzerJ3@michigan.gov

Ben Schram

Forestry Assistance Program Coordinator
SchramB1@michigan.gov



@MIDeptofAgriculture



@MichDeptofAg



Michigan Department
of Agriculture & Rural
Development



@MichiganAgriculture



Michigan Department
of Agriculture & Rural
Development