



Budget Briefing: State Police

Marcus Coffin, Fiscal Analyst

August 2018

Briefing Topics

- Funding Sources
- Appropriation Areas
- Major Budget Topics

Department State Police

The Department of State Police – also known as the Michigan State Police (MSP) – provides law enforcement and public safety services throughout the state. In addition to primary law enforcement, criminal investigation, and traffic safety duties, the department is also responsible for the administration and implementation of state programs, technologies, and services that enhance the capabilities and coordination of federal, state, and local law enforcement and criminal justice agencies.

The MSP provides services that include, but are not limited to:

- Patrol of major state highways
- Records and information management and sharing
- Criminal investigations and forensic science services
- Special services, such as aviation, dive teams, Emergency Support Team (SWAT), and bomb squads
- Coordination of disaster relief and homeland security efforts
- Commercial vehicle regulation and enforcement, and school bus inspections
- Establishment and upholding of law enforcement standards, and distribution of grants to local law enforcement agencies

Key Budget Terms

Fiscal Year: The state's fiscal year (FY) runs from October to September. FY 2018-19 is October 1, 2018 through September 30, 2019.

Appropriation: Authority to expend funds. An appropriation is not a mandate to spend. Constitutionally, state funds cannot be expended without an appropriation by the Legislature.

Line Item: Specific appropriation amount in a budget bill which establishes spending authorization for a particular program or function.

Boilerplate: Specific language sections in a budget bill which direct, limit, or restrict line item expenditures, express legislative intent, and/or require reports.

Lapse: Appropriated amounts that are unspent or unobligated at the end of a fiscal year. Appropriations are automatically terminated at the end of a fiscal year unless designated as a multi-year work project under a statutory process. Lapsed funds are available for expenditure in the subsequent fiscal year.

Note: Unless otherwise indicated, historical budget figures in this presentation have not been adjusted for inflation.

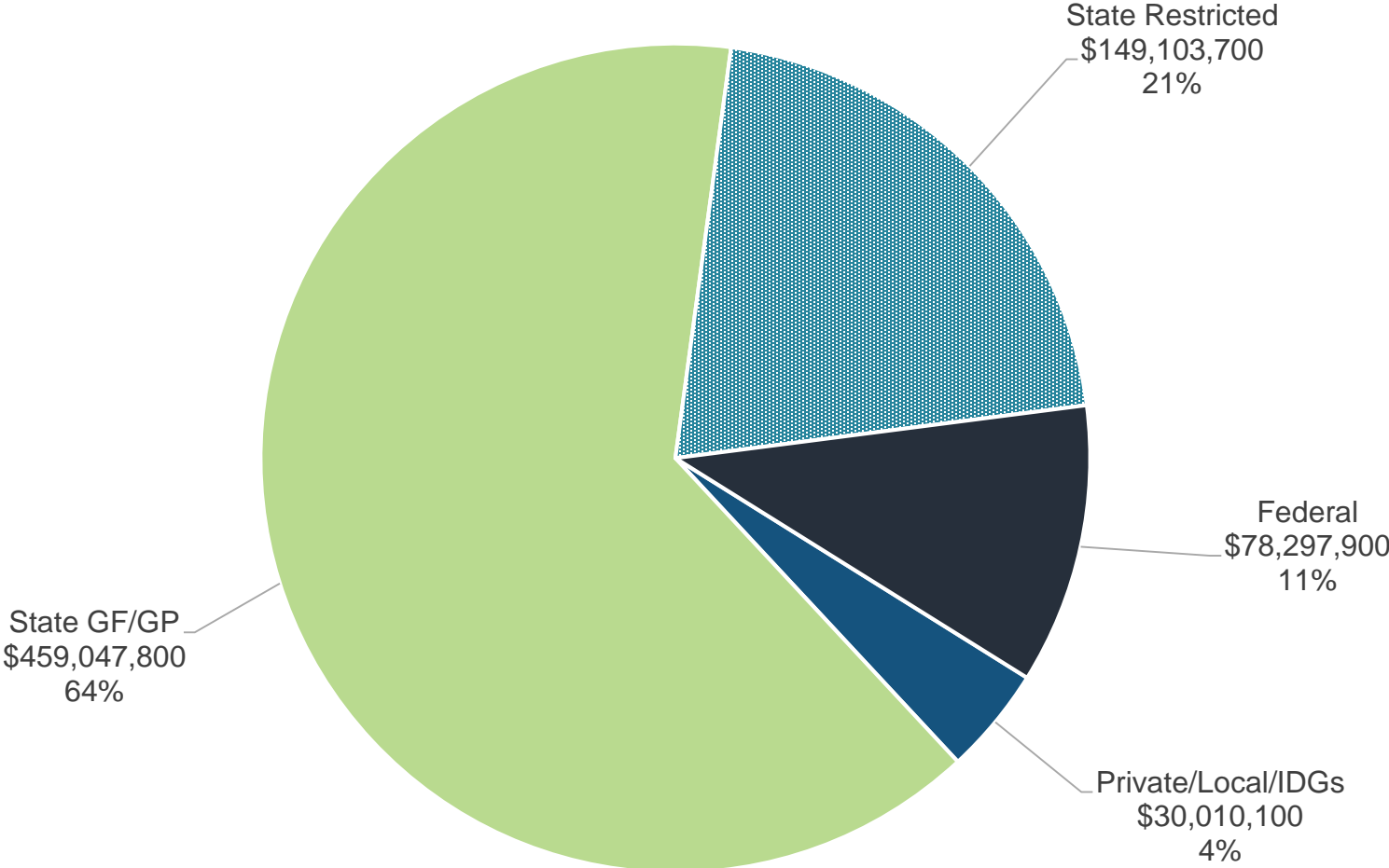
Funding Sources

FY 2018-19 MSP Budget

Fund Source	Funding	Description
Gross Appropriations	\$716,459,500	Total spending authority from all revenue sources
Interdepartmental Grants (IDG) Revenue	24,748,300	Funds received by one state department from another state department, usually for services provided
Adjusted Gross Appropriations	\$691,711,200	Gross appropriations excluding IDGs; avoids double counting when adding appropriation amounts across budget areas
Federal Revenue	78,297,900	Federal grant or matching revenue; generally dedicated to specific programs or purposes
Local Revenue	5,146,800	Revenue received from local units of government for state services
Private Revenue	115,000	Revenue from individuals and private entities, including payments for services, grants, and other contributions
State Restricted Revenue	149,103,700	State revenue restricted by the State Constitution, state statute, or outside restriction that is available only for specified purposes; includes most fee revenue
State General Fund/General Purpose (GF/GP) Revenue	\$459,047,800	Unrestricted revenue from taxes and other sources available to fund basic state programs and other purposes determined by the Legislature

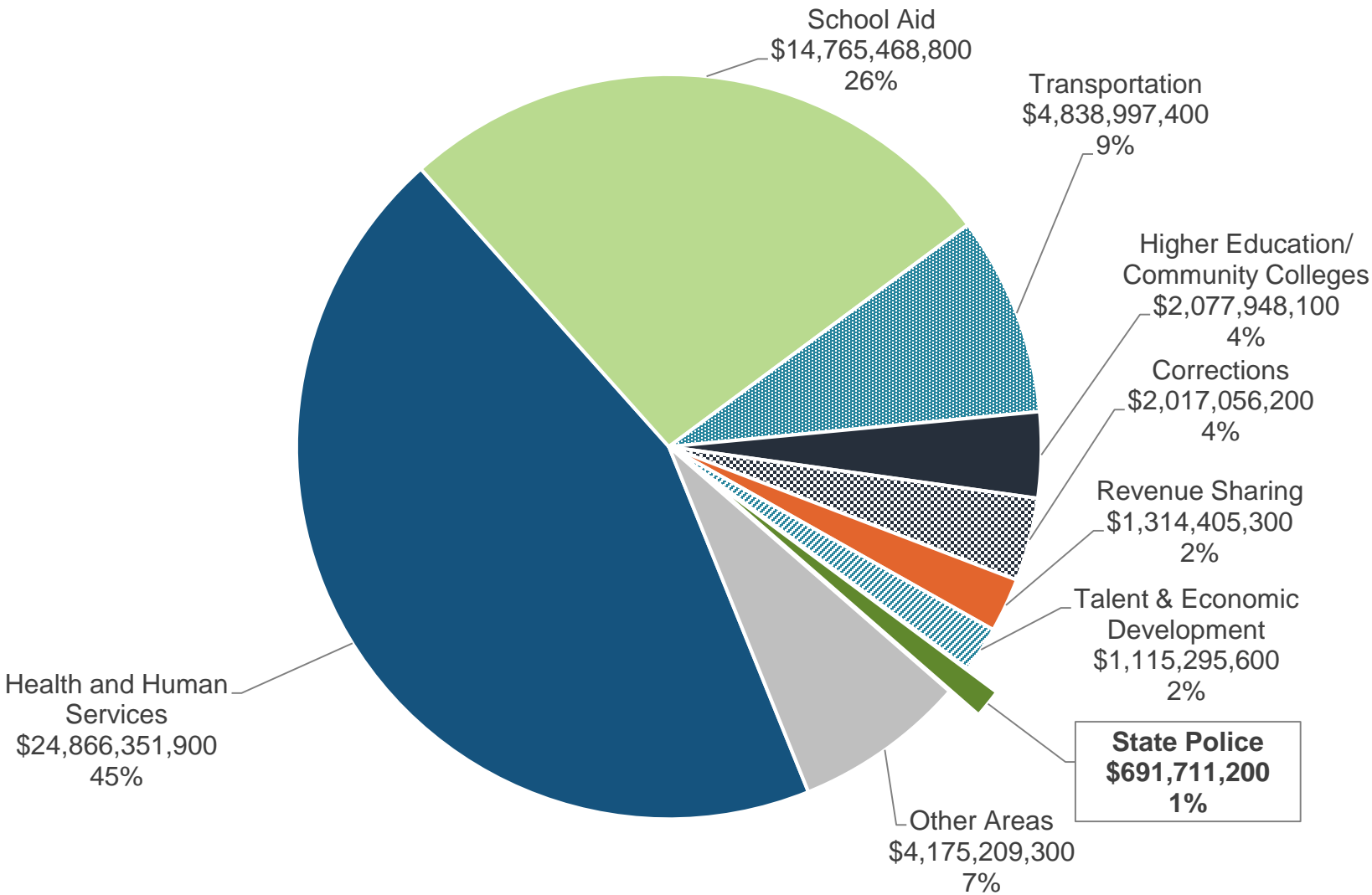
FY 2018-19 Fund Sources

Approximately 64% of the \$716.5 million MSP budget consists of discretionary GF/GP funds.



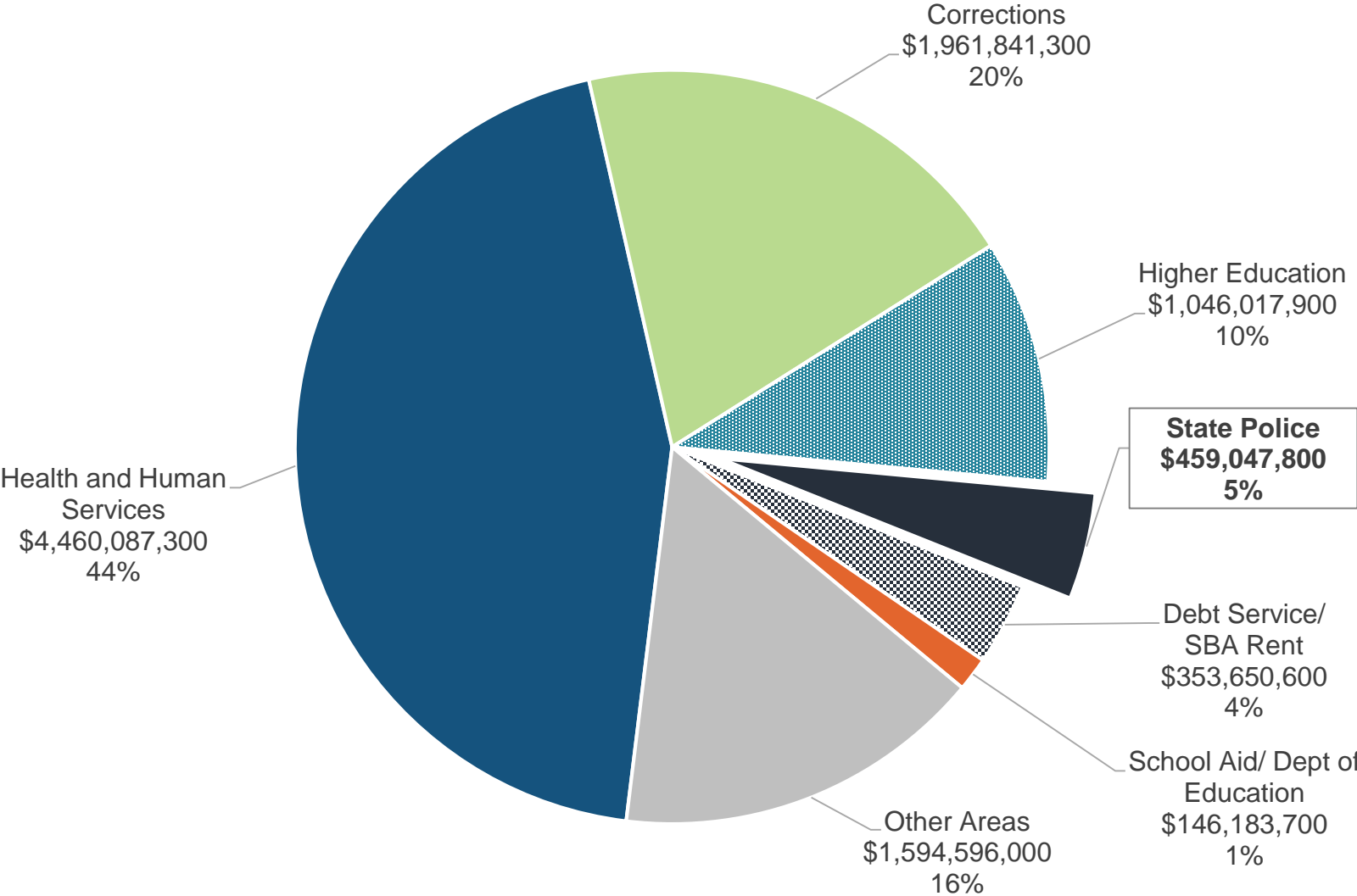
MSP Share of Total State Budget

The MSP budget represents approximately 1% of the **\$55.9 billion** state budget (adjusted gross) for FY 2018-19.



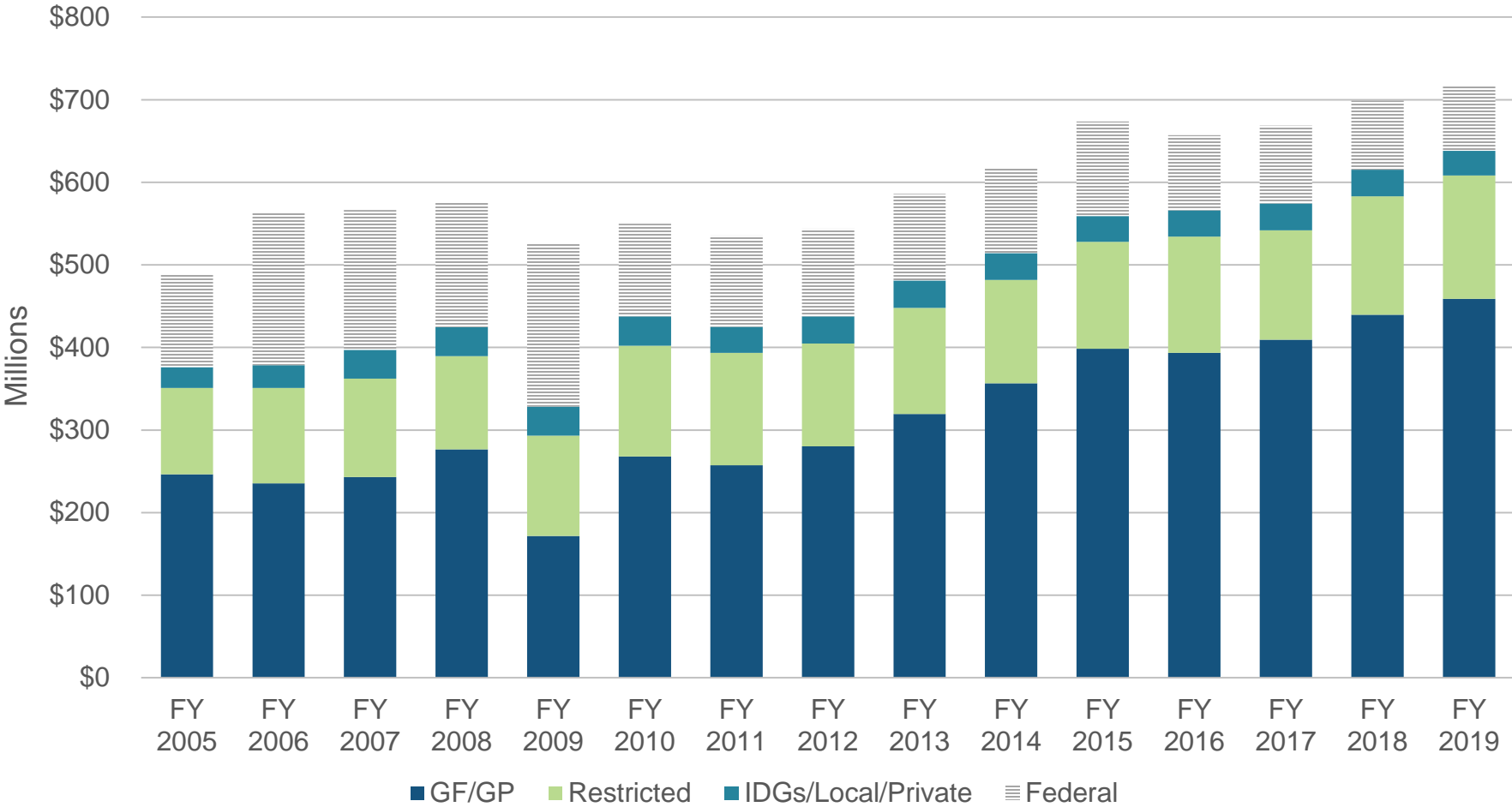
MSP Share of Total GF/GP Budget

The MSP budget represents approximately 5% of the **\$10.0 billion** state GF/GP budget appropriations for FY 2018-19.



MSP Funding History

State Police funding has grown by approximately 47% since FY 2004-05. Increases in FYs 2012-13, 2013-14, and 2014-15 were largely due to Trooper Recruit Schools undertaken to offset promotions and separations and to rebuild strength.



Appropriation Areas

MSP Appropriation Areas

Departmental Administration and Support: Unclassified personnel, fleet costs, lease obligations and state-owned property costs, management and accounting staff, executive protection, and various administrative sections

Law Enforcement Services: Biometric and forensic science services, Criminal Justice Information Center, staff and operations of the state 9-1-1 administration, community service and grants to local criminal justice agencies, Michigan Youth Leadership Academy, and the Training Division, which provides training to personnel across the department

Michigan Commission on Law Enforcement Standards (MCOLES): Development of training curricula and law enforcement standards, issuance and revocation of law enforcement licensure, Public Safety Officers Benefit Program, and partial reimbursement of the costs to local law enforcement agencies to train employed officer candidates

Field Services: Officers and enlisted personnel, law enforcement operations of the seven MSP districts and associated posts, casino gaming oversight and tobacco tax fraud enforcement, the Impaired Driving Safety Commission Fund, and the Secure Cities Partnership, which provides MSP services to select distressed cities

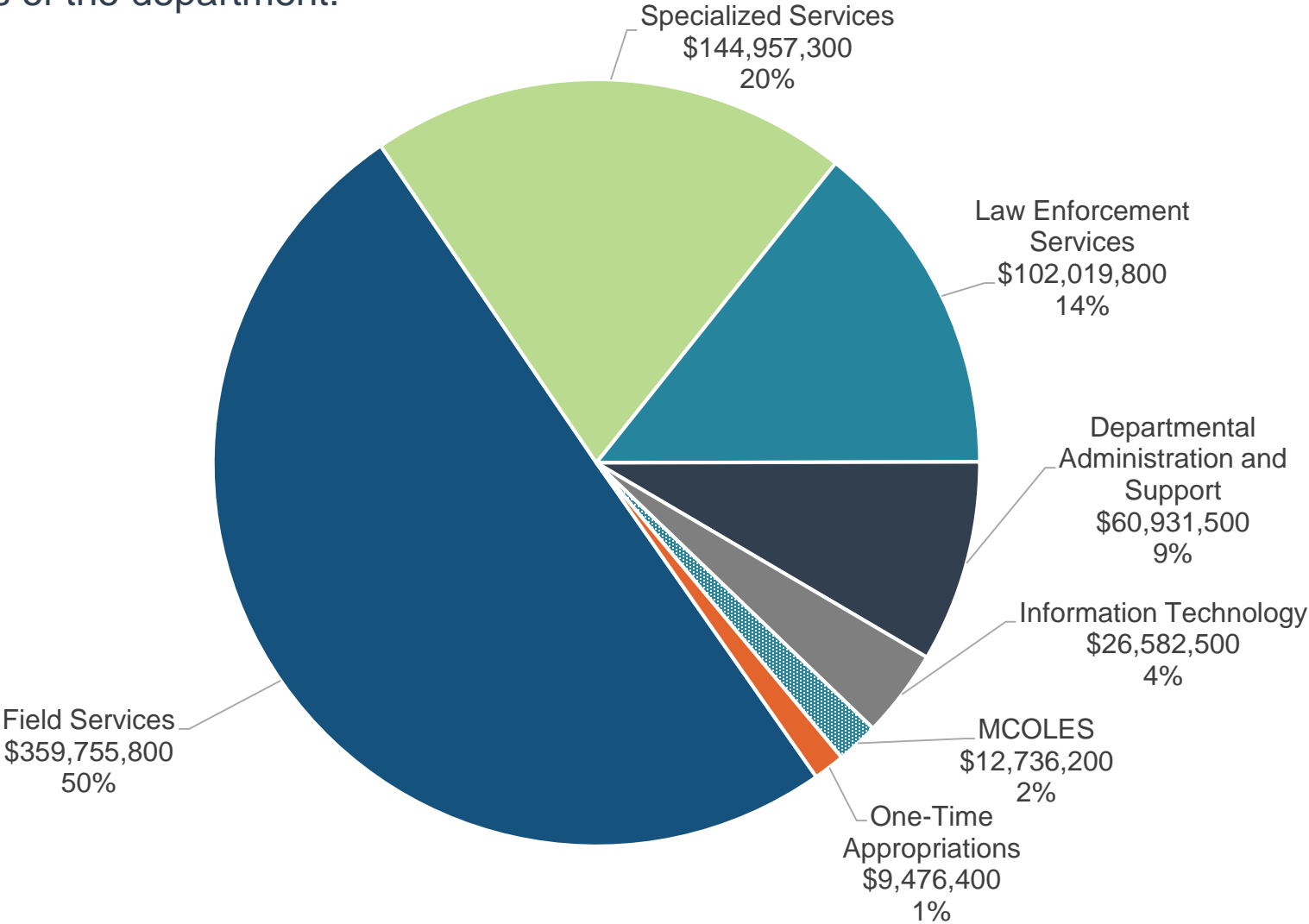
Specialized Services: Grants to local law enforcement agencies to patrol secondary roads, commercial vehicle regulation and enforcement, State Emergency Operations Center and other disaster-related training and response operations, highway safety planning, Michigan Intelligence Operations Center, and the Special Operations Division, which oversees and operates MSP special service teams (e.g., aviation and SWAT)

Information Technology: Provides for the department's IT services and projects

One-Time Appropriations: Trooper Recruit School, sexual assault prevention grants to colleges and universities, providing traffic control services to Michigan International Speedway, and a placeholder for OK2SAY IT upgrades

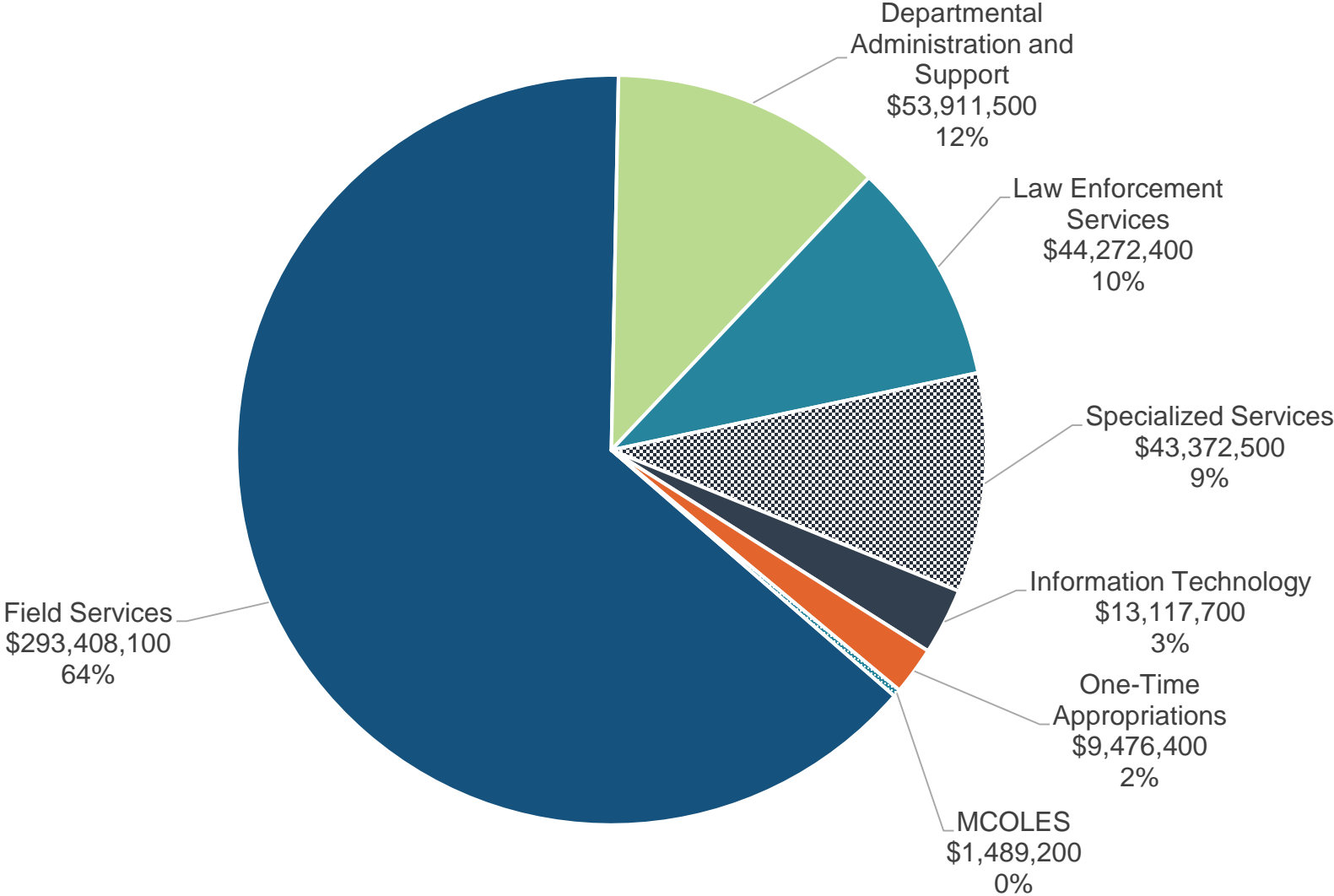
FY 2018-19 Gross Appropriations

Approximately 50% of the \$716.5 million MSP budget consists of the Field Services appropriation unit, which includes the general law enforcement and criminal investigation operations of the department.



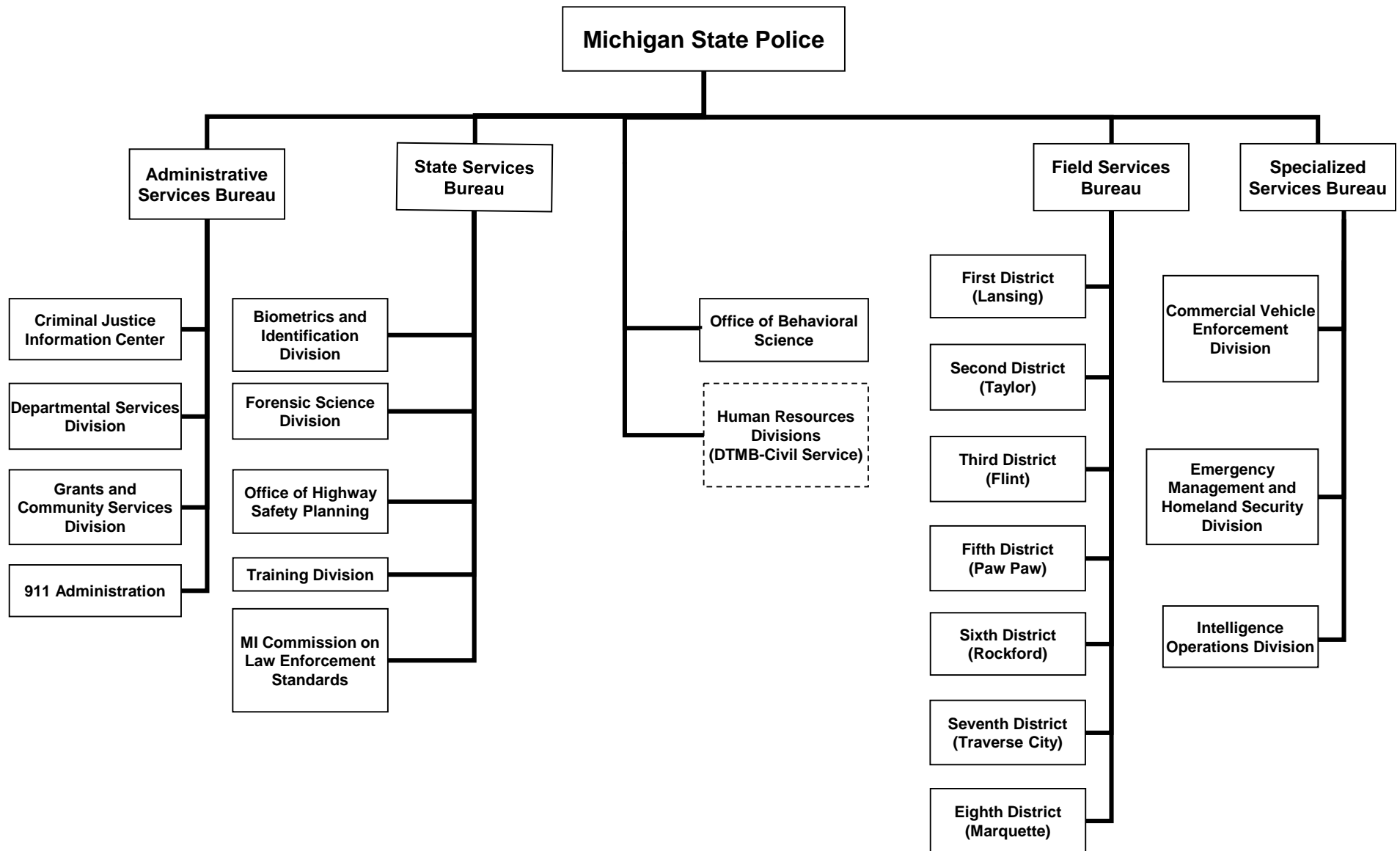
FY 2018-19 GF/GP Appropriations

GF/GP funds (totaling **\$459.0 million**) are also more heavily concentrated in Field Services, which accounts for 64% of the total GF/GP appropriations to the MSP budget.



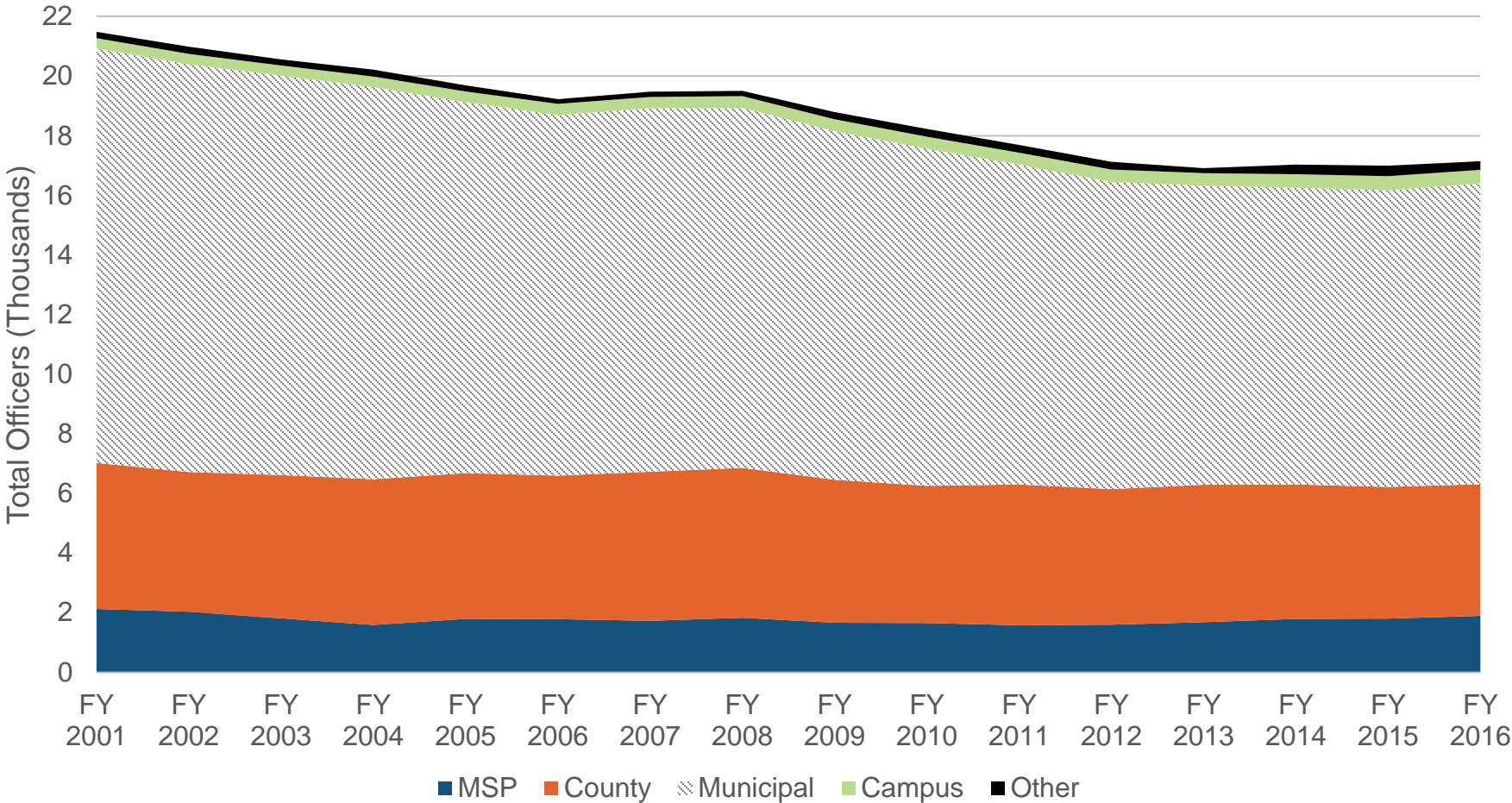
Major Budget Topics

State Police Organization



Law Enforcement Strength

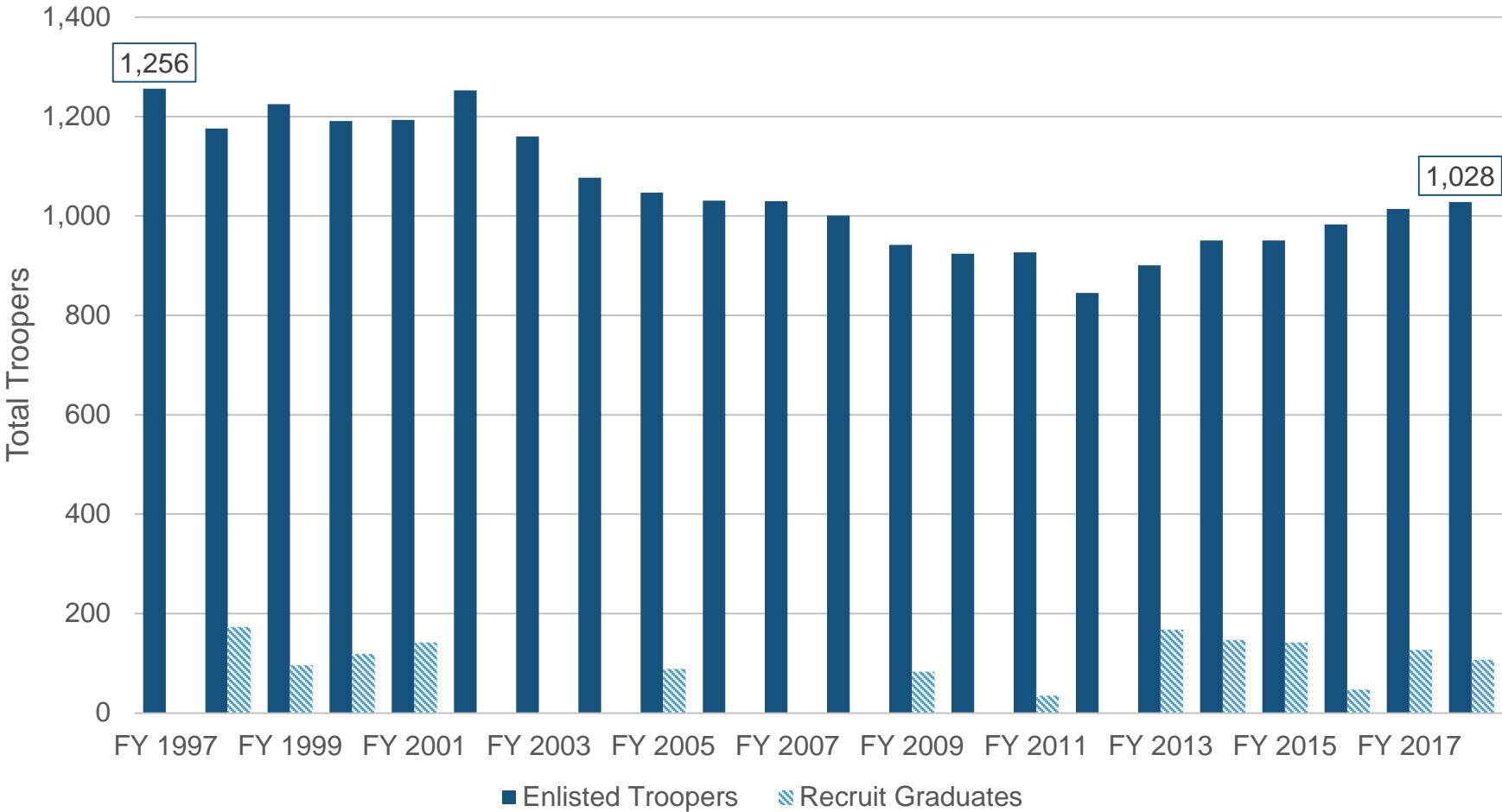
Total law enforcement strength in Michigan has decreased by approximately 20% between FY 2000-01 and FY 2015-16. County sheriff strength has remained relatively stable over the same period, only decreasing by approximately 10%.



Source: FBI Uniform Crime Reporting Statistics

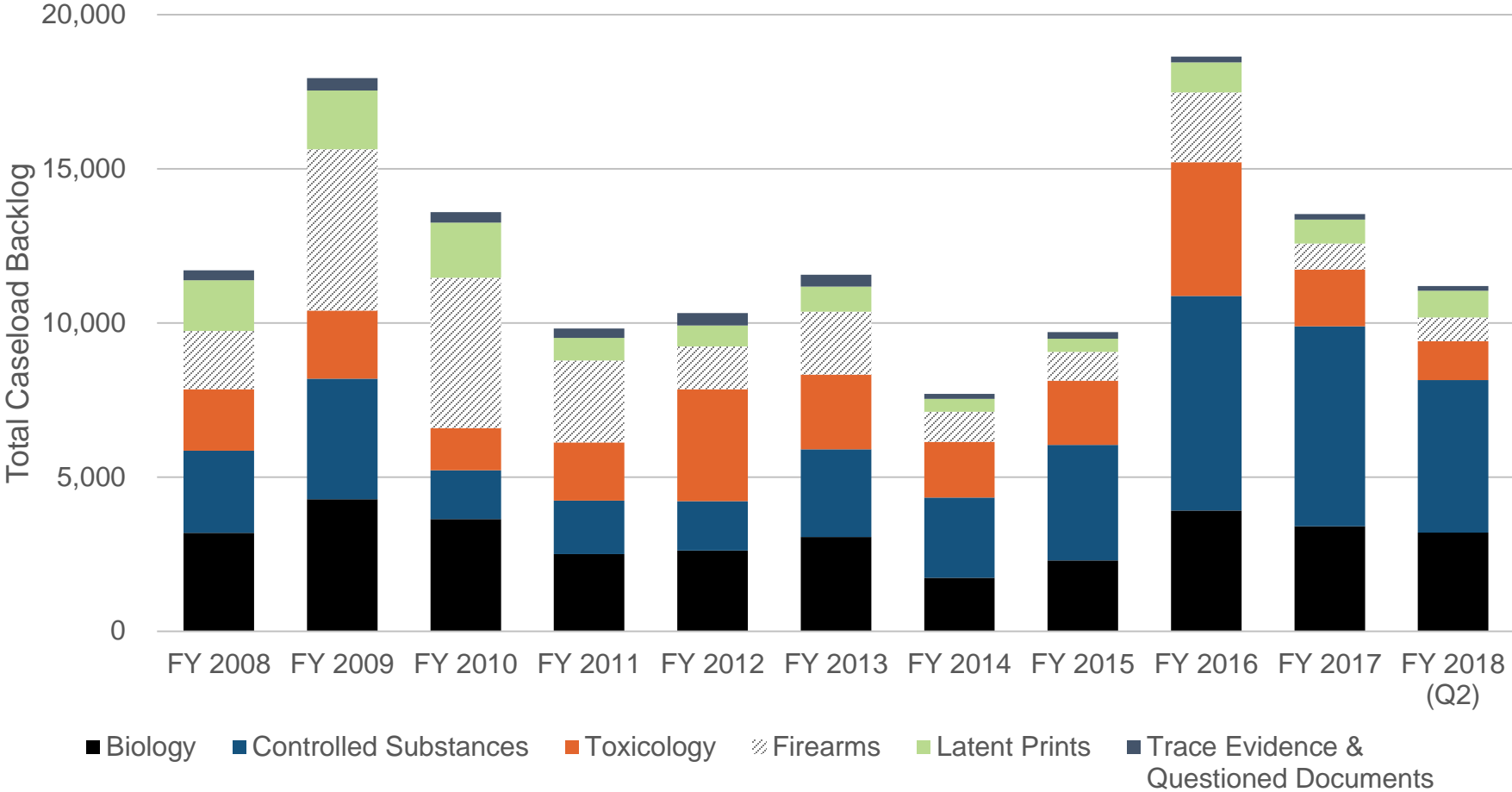
State Police At-Post Trooper Strength

Despite several years of increases, the FY 2017-18 trooper levels are still below their previous FY 1996-97 peak. An additional 107 new graduates are joining the ranks as of July 2018, and the FY 2018-19 budget provides for trooper schools totaling 155 recruits.



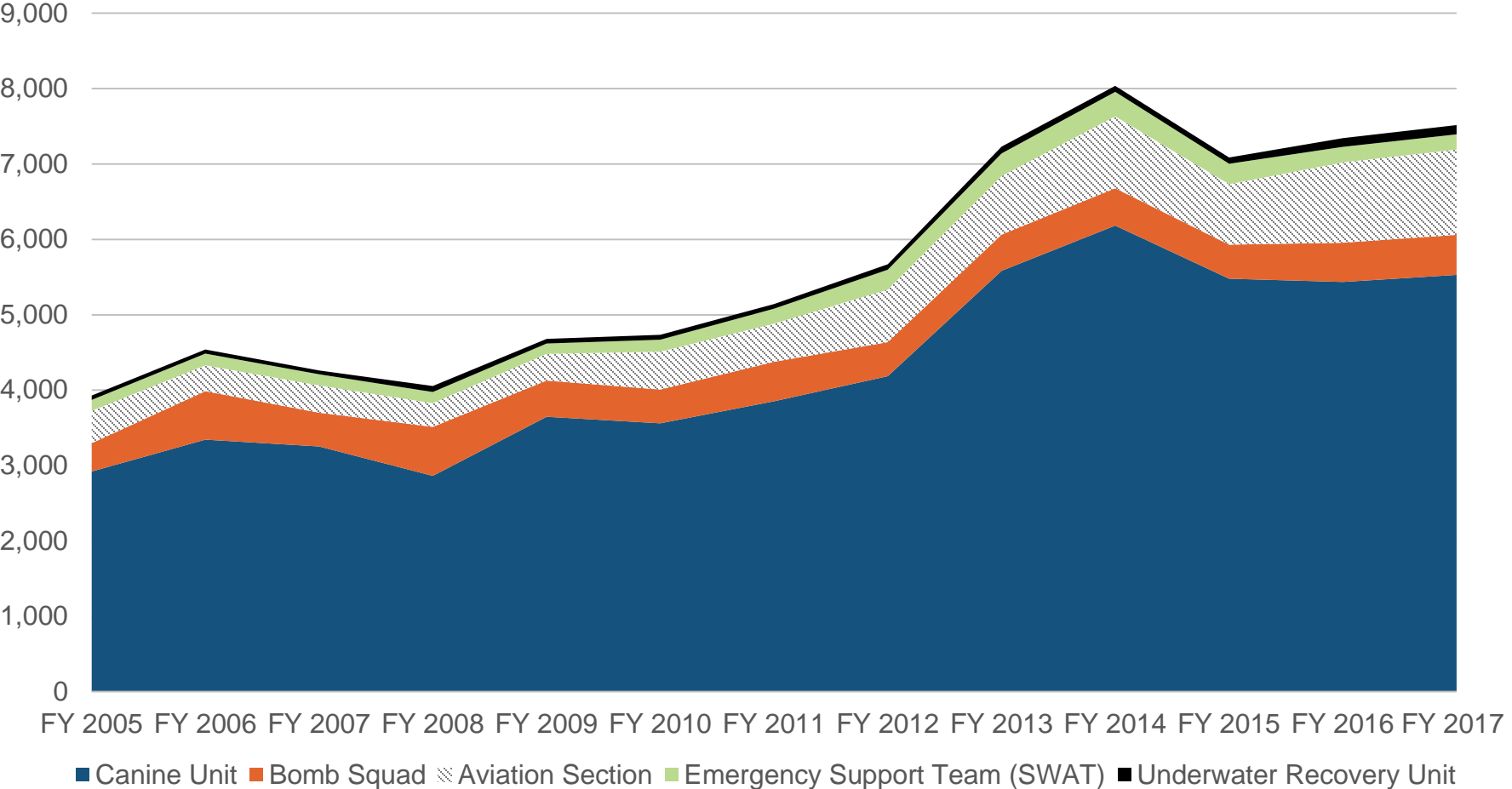
Forensics Caseload Backlog

Total backlogs in the forensics caseloads have decreased by 27% between the end of FY 2015-16 and the end of FY 2016-17. The substantial increase in case backlog during FY 2015-16 was due to firearms, toxicology, and biology cases substantially exceeding expected caseload intake.



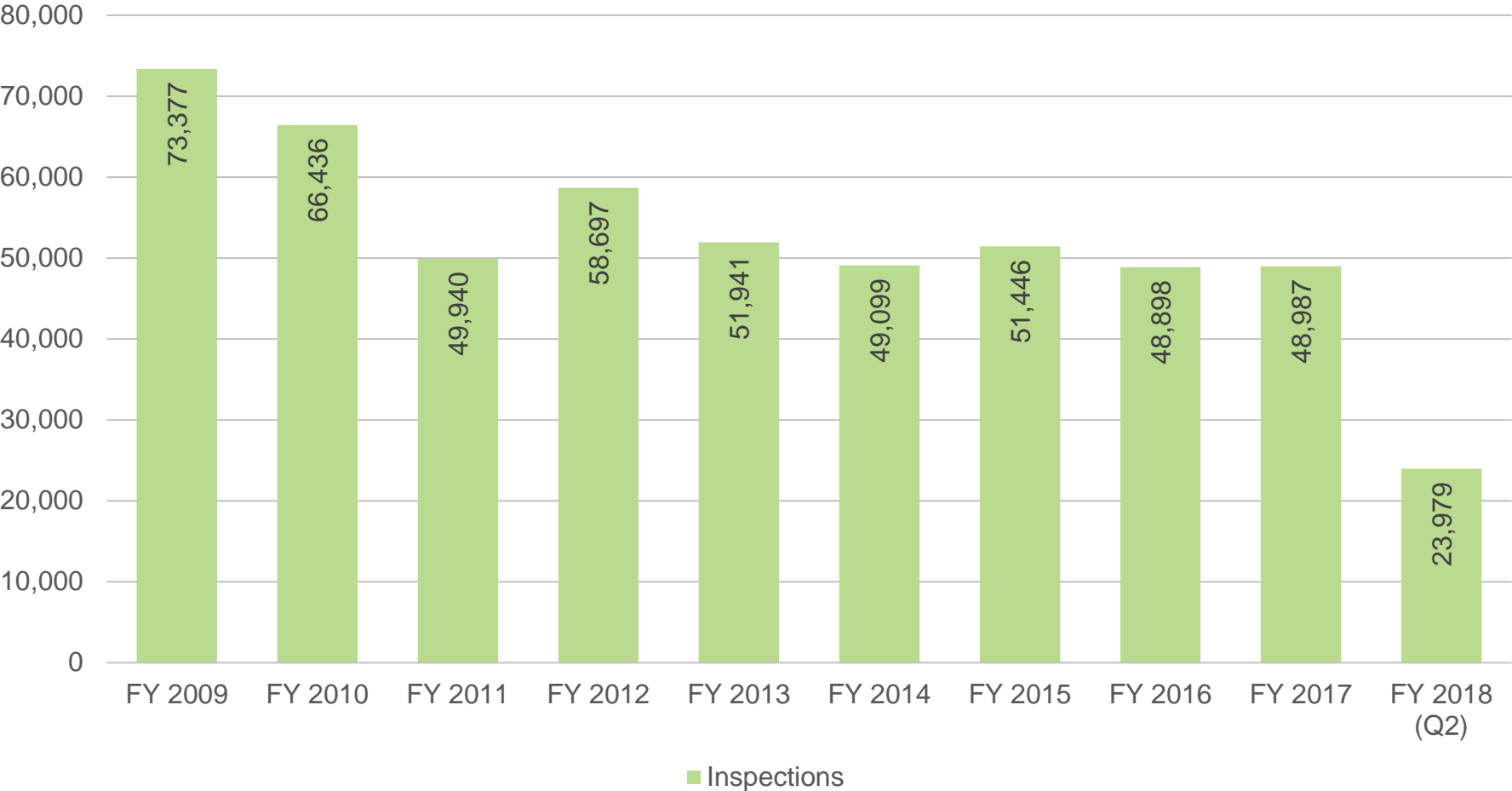
Local Requests for Specialized Services

Total local requests for MSP specialized services teams have increased by 91% between the end of FY 2004-05 and the end of FY 2016-17. Requests for canine units makes up the vast majority of requests, with approximately 5,400 and 5,500 requests for support in FY 2015-16 and FY 2016-17, respectively.



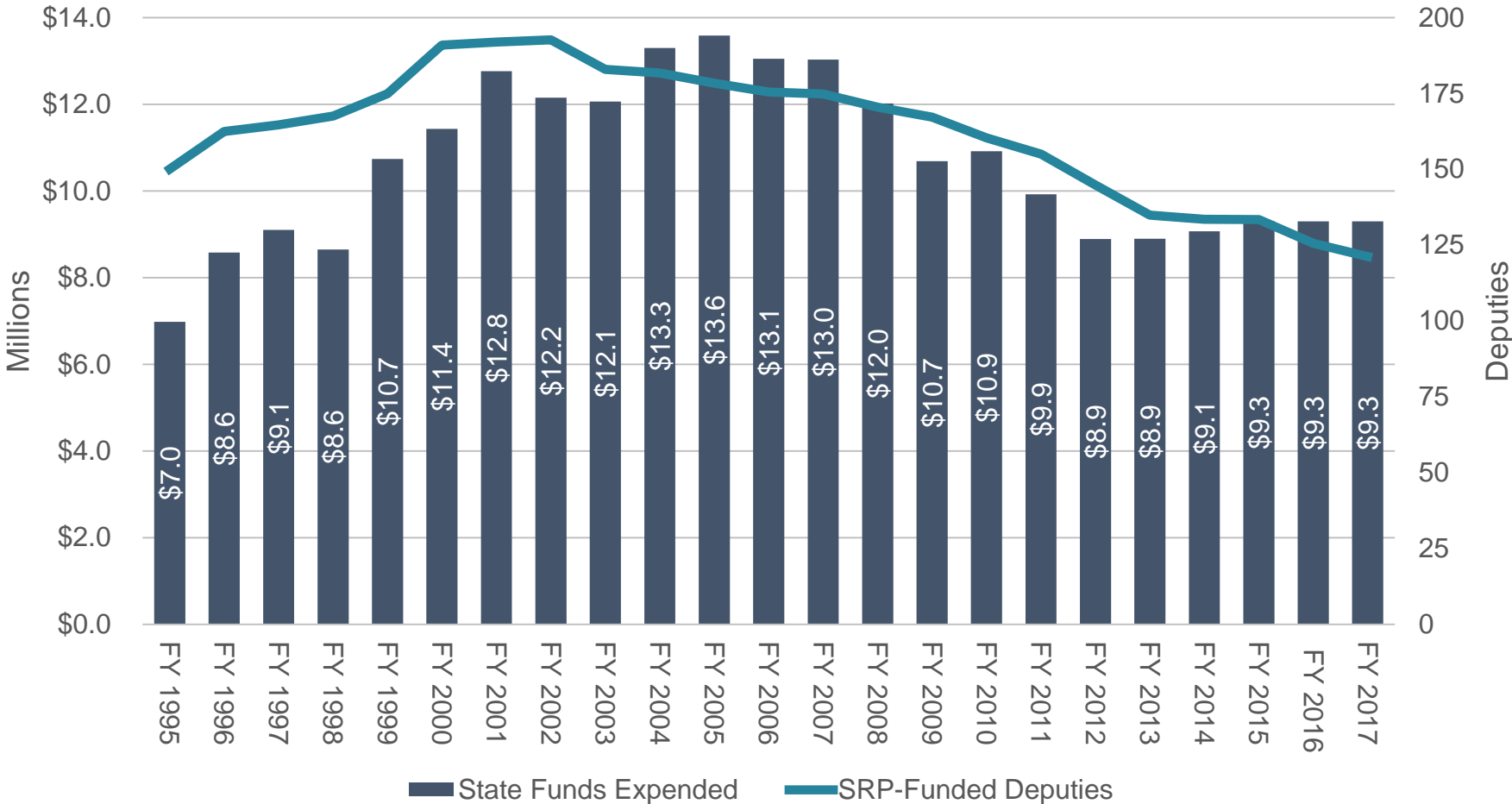
Commercial Vehicle Enforcement

Total inspections of commercial vehicles operating on Michigan roads has decreased by approximately 33% between the end of FY 2008-09 and the end of FY 2016-17, with total commercial vehicle inspections remaining relatively stable between FY 2012-13 and FY 2016-17.



Secondary Road Patrol

Grants to county sheriffs to support patrols of state secondary roads peaked in FY 2004-05 with \$13.6 million restricted expended, and total funded deputies peaked in 2001-02 with 193 supported. Between FY 2005-06 and FY 2016-17, total expenditures have declined by 29% while total SRP-funded deputies have declined by 31%.

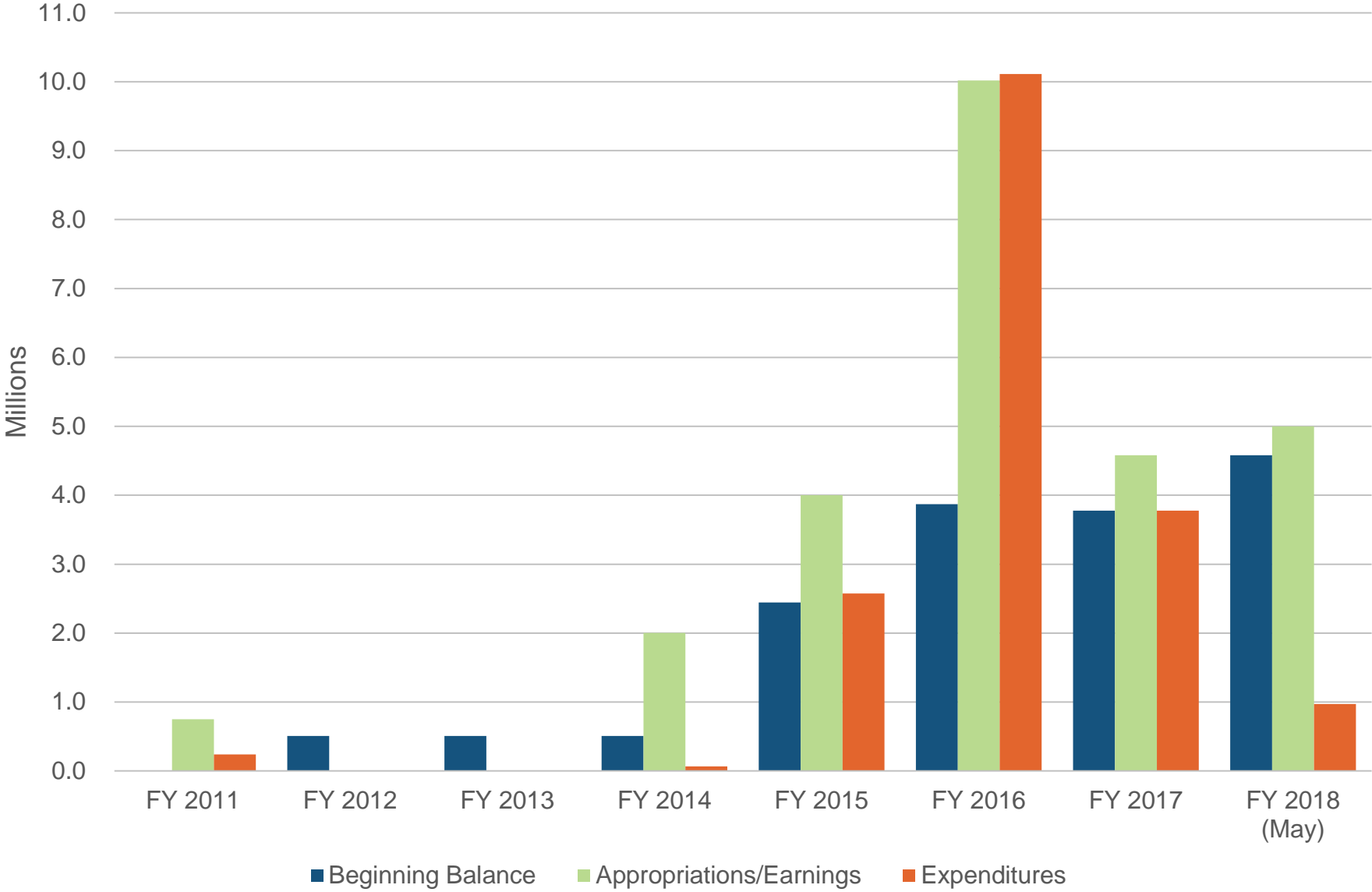


Source: SRP Annual Report

Disaster and Emergency Contingency Fund

- The Disaster and Emergency Contingency Fund (DECF) is a reserve fund utilized during a declared state disaster or emergency in order to respond to, and mitigate the effects of, a disaster or emergency.
- DECF was depleted during the early months of FY 2015-16 during the Flint water emergency.
- The statutory cap was raised from \$4.5 to \$10.0 million and \$10.0 million GF/GP was deposited into the fund in FY 2015-16.
- A supplemental appropriation of \$4.0 million GF/GP was deposited into the DECF in FY 2016-17.
- \$5.0 million GF/GP was appropriated in one-time funding to the DECF in the FY 2017-18 budget.

Disaster and Emergency Contingency Fund



FY 2018-19 One-Time Appropriations

Trooper Recruit School: \$7.8 million GF/GP to support the one-time training costs of graduating 140 new State Police Troopers.

Michigan International Speedway Traffic Control: \$725,000 GF/GP to support the costs of providing traffic control services to Michigan International Speedway during major sporting and entertainment events.

OK2SAY IT Upgrade: \$100 placeholder for future funding for upgrades related to the program's software.

Sexual Assault Prevention and Education Initiative: \$1 million GF/GP to provide competitive grants to institutions of higher learning in order to assist in implementing methods of preventing on and off-campus sexual assault.

For more information about the State Police budget:

HFA Resources

<http://www.house.mi.gov/hfa/StatePolice.asp>

Contact Information

Marcus Coffin

Fiscal Analyst

mcoffin@house.mi.gov

(517) 373-8080